

Blind rivet setting tools

for industrial applications



Your distributor



Premium Power Tools

MADE IN GERMANY



HS-Technik GmbH
High - System - Technik

6 RivBee® Light-Series

Type designation: RBL-xx

Battery Blind Rivet Tool with OLED-Display

For precise setting processes

Service counter

-
- Programmable via USB with HST-Tool-Manager
 - Programmable parameters:
 - Current
 - Stroke
 - Speed
 - Time
 - Multi-step programming (6 steps)
 - QuickRiv Technology
 - Handle vibration alarm
 - OLED-Display
 - Multi-colored status LED
 - Intelligent battery management
 - Programmable service counter
 - Display of the riveting results
-

7 RivBee® P-Series

Type designation: RBP-xxxx

Programmable Battery Blind Rivet Tool

Blind rivet counter

Optional:

Barcode reader & Wi-Fi

-
- Programmable via USB with HST-Tool-Manager
 - Programmable parameters:
 - Current
 - Stroke
 - Speed
 - Time
 - Multi-step programming (6 steps)
 - QuickRiv technology
 - Handle vibration alarm
 - OLED-Display
 - Multi-colored status LED
 - Intelligent battery management
 - Blind rivet counter
 - Recovery (counter memory function)
 - 100 individual programs
 - Min. 150,000 results incl. setting curves (current/stroke) are saved in the tool
 - Process documentation and quality assessment with current/stroke curve
 - Documentation of the date and time of each riveting process
-

8 RivBee® PF-Series

Type designation: RBPF-xxxx

Programmable Battery Blind Rivet Tool

Force sensor

Process documentation (Force/Stroke)

Optional:

Barcode reader & Wi-Fi

-
- Programmable via USB with HST-Tool-Manager
 - Programmable parameters:
 - Force
 - Current
 - Stroke
 - Speed
 - Time
 - Multi-step programming (6 steps)
 - QuickRiv Technology
 - Handle vibration alarm
 - OLED-Display
 - Multi-colored status LED
 - Intelligent battery management
 - Blind rivet counter
 - Recovery (counter memory function)
 - 100 individual programs
 - Min. 150,000 results incl. setting curves (force/stroke) are saved in the tool
 - Process documentation and quality assessment with force/stroke curve
 - Documentation of the date and time of each riveting process
-

RivBee® -Series

Overview

- 1 Mandrel collection container**
- 2 Precision ballscrew for rapid setting processes**
- 3 Quick-change system**
Allows for quick chuck jaw replacement and system cleaning
- 4 Nose piece**
- 5 OLED-Display for operator guidance**
- 6 Brushless motor**
for faster, powerful working, maintenance-free
- 7 Start button**
- 8 Ergonomic handle**
to better guide the tool with NOK-vibration alarm
- 9 USB under the battery**
Can be programmed for your specific application
- 10 Powerful LED**
optimum lighting even in poor lighting conditions
- 11 Optional Wi-Fi***
Wi-Fi 2.4 & 5 GHz
- 12 Optional barcode reader***
- 13 Premium Li-Ion battery**
18 Volt 2.5 Ah / 5.0 Ah



* Not available in the Light version.

RivBee® -Series

Features



Multicolor LED control light

Individually programmable!



Intelligent battery management

Battery level indicator and effective protection against the Li-Ion battery deep discharging.



Software HST-Tool-Manager

Intuitive and quick programming of HS-Technik power tools.



Handle vibration alarm

NOK status



OLED-Display

Visualization of setting results and tool status.



Job / Sequence*

Allows for sequences to be processed without additional controller.



Optional barcode reader integrated into the tool*

Barcodes with up to 64 characters can be read and processed.



Optional Wi-Fi for data transmission*

Connection to HST Controller.



Recovery (counter memory function)*

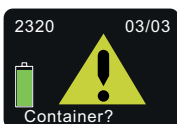
Status memory for the rivet counter when changing the battery.



Pressure control

Ensures the components are optimally joined.

Required in accordance with Machine Directive (2006/42/EC).



Mandrel container monitoring

Safety benefit - riveting without a container is not possible.

Required in accordance with Machine Directive (2006/42/EC).

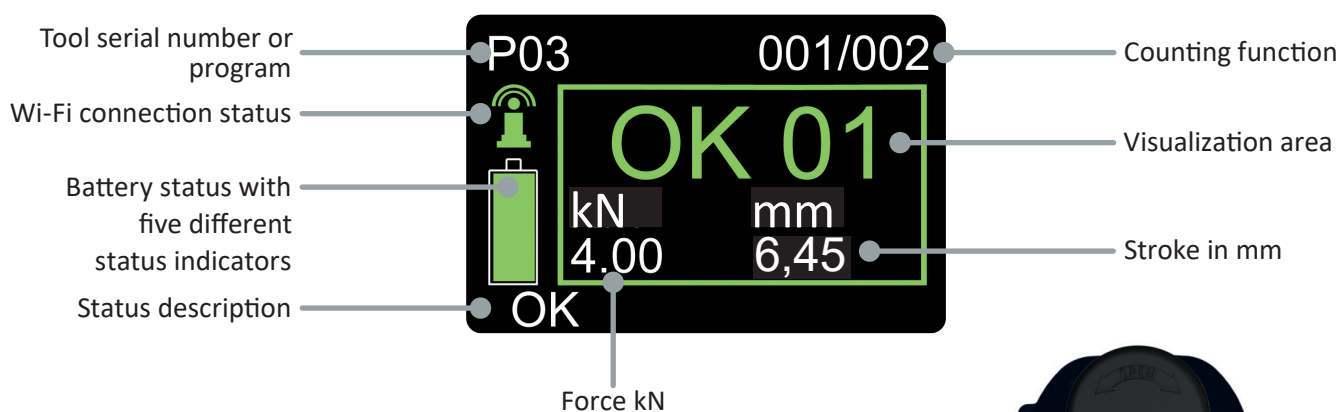
* Not available in the Light version.

RivBee® -Series

Overview of features

Features	RivBee® Light	RivBee® P	RivBee® PF
Multicolor LED control light	•	•	•
Intelligent battery management	•	•	•
HST-Tool-Manager programming software	•	•	•
Handle vibration alarm	•	•	•
OLED-Display	•	•	•
Programmable service counter	•	•	•
Blind rivet counter		•	•
Recovery (counter memory function)		•	•
100 individual programs		•	•
Min. 150,000 results saved incl. setting curve		•	•
Process documentation and quality assessment with current/stroke curve		•	•
Process documentation and quality assessment with force/stroke curve			•
Load cell included in tool			•
Optional: Barcode reader & Wi-Fi		•	•
Further information	Page 6	Page 7	Page 8

OLED-Display



The display on the RivBee® was developed so the operator is intuitively guided through the process steps and can view the quality of the rivet connection at any time.

You can find accessories for the blind rivet setting tools starting on page 9.

RivBee® Light-Series

Battery blind rivet tool

- 25 mm device stroke
- Nose assembly with quick-change system
- Nose assemblies for Koenig expander available
- Adapter for Huck / Arconic / GageBilt / available
- Handle vibration alarm
- OLED-Display
- Intelligent battery management
- Brushless high-power motor
- Collection container monitoring
- Contact pressure sensor
- LED to illuminate the application area
- Recuperation extends the battery service time
- Service counter for preventive maintenance



Technical data

Model	max. setting force	Setting speed	Dimensions L × W × H	Weight	max. mandrel Ø	Remark
RBL-15	15 kN (3370 lbf)	47 mm/sec.	302 × 73 × 270 mm (11.88 × 2.87 × 10.63 in)	1.70 kg (3.75 lbs)	4.5 mm (0.18 in)	incl. pressure sensor & nose assembly 60 mm
RBL-20	20 kN (4496 lbf)	37 mm/sec.	302 × 73 × 270 mm (11.88 × 2.87 × 10.63 in)	1.70 kg (3.75 lbs)	6.3 mm (0.25 in)	incl. pressure sensor & nose assembly 60 mm
RBL-15SFC1	15 kN (3370 lbf)	47 mm/sec.	302 × 73 × 270 mm (11.88 × 2.87 × 10.63 in)	1.70 kg (3.75 lbs)	4.5 mm (0.18 in)	incl. pressure sensor & nose assembly SFC
RBL-20SFC4	20 kN (4496 lbf)	37 mm/sec.	302 × 73 × 270 mm (11.88 × 2.87 × 10.63 in)	1.70 kg (3.75 lbs)	6.3 mm (0.25 in)	w/o pressure sensor & incl. nose assembly SFC
RBL-15HU	15 kN (3370 lbf)	47 mm/sec.	302 × 73 × 270 mm (11.88 × 2.87 × 10.63 in)	1.70 kg (3.75 lbs)	4.5 mm (0.18 in)	without nose assembly & pressure sensor
RBL-20HU	20 kN (4496 lbf)	37 mm/sec.	302 × 73 × 270 mm (11.88 × 2.87 × 10.63 in)	1.70 kg (3.75 lbs)	6.3 mm (0.25 in)	without nose assembly & pressure sensor

SFCx = SFC expander nose assembly

HU = Adapter for Huck/Arconic/Gage Bilt nose assembly**

**There is no guarantee that all traction heads from the manufacturer's named will fit. Contact us for further information.
Dimensions and weights without nose assembly and battery.
Delivered without nose piece, battery and charger.

RivBee® P-Series

Programmable battery blind rivet tool

All RivBee® Light functions plus:

- Blind rivet counter
- Recovery (counter memory function)
- 100 individual programs
- Process and quality documentation with current/stroke curve
- At least 150,000 results incl. setting curves are saved in the tool
- Optional: Barcode reader and Wi-Fi



Technical data

Model	max. setting force	Setting speed	Dimensions L × W × H	Weight	max. mandrel Ø	Remark
RBP-15*	15 kN (3370 lbf)	47 mm/sec.	302 × 73 × 270 mm (11.88 × 2.87 × 10.63 in)	1.70 kg (3.75 lbs)	4.5 mm (0.18 in)	incl. pressure sensor & nose assembly 60 mm
RBP-20*	20 kN (4496 lbf)	37 mm/sec.	302 × 73 × 270 mm (11.88 × 2.87 × 10.63 in)	1.70 kg (3.75 lbs)	6.3 mm (0.25 in)	incl. pressure sensor & nose assembly 60 mm
RBP-15*SFC1	15 kN (3370 lbf)	47 mm/sec.	302 × 73 × 270 mm (11.88 × 2.87 × 10.63 in)	1.70 kg (3.75 lbs)	4.5 mm (0.18 in)	incl. pressure sensor & nose assembly SFC
RBP-20*SFC4	20 kN (4496 lbf)	37 mm/sec.	302 × 73 × 270 mm (11.88 × 2.87 × 10.63 in)	1.70 kg (3.75 lbs)	6.3 mm (0.25 in)	w/o pressure sensor & incl. nose assembly SFC
RBP-15*HU	15 kN (3370 lbf)	47 mm/sec.	302 × 73 × 270 mm (11.88 × 2.87 × 10.63 in)	1.70 kg (3.75 lbs)	4.5 mm (0.18 in)	without nose assembly & pressure sensor
RBP-20*HU	20 kN (4496 lbf)	37 mm/sec.	302 × 73 × 270 mm (11.88 × 2.87 × 10.63 in)	1.70 kg (3.75 lbs)	6.3 mm (0.25 in)	without nose assembly & pressure sensor

*W = Wi-Fi option

*B = Barcode reader option

*WB = Wi-Fi & barcode reader option

SFCx = SFC expander nose assembly

HU = Adapter for Huck/Arconic/Gage Bilt nose assembly**

**There is no guarantee that all traction heads from the manufacturer's named will fit. Contact us for further information.

Dimensions and weights without nose assembly and battery.

Delivered without nose piece, battery and charger.

You can find accessories for the blind rivet setting tools starting on page 9.

RivBee® PF-Series

Programmable battery blind rivet tool with force sensor

All RivBee® Light and RivBee® P-Series functions plus:

- Process and quality documentation with force/stroke curve
- Force sensor, precision class $\leq 0.5\%$



Technical data

Model	max. setting force	Setting speed	Dimensions L x W x H	Weight	max. mandrel \varnothing	Remark
RBPF-15*	15 kN (3370 lbf)	47 mm/sec.	302 x 73 x 270 mm (11.88 x 2.87 x 10.63 in)	1.70 kg (3.75 lbs)	4.5 mm (0.18 in)	incl. pressure sensor & nose assembly 60 mm
RBPF-20*	20 kN (4496 lbf)	37 mm/sec.	302 x 73 x 270 mm (11.88 x 2.87 x 10.63 in)	1.70 kg (3.75 lbs)	6.3 mm (0.25 in)	incl. pressure sensor & nose assembly 60 mm
RBPF-15*SFC1	15 kN (3370 lbf)	47 mm/sec.	302 x 73 x 270 mm (11.88 x 2.87 x 10.63 in)	1.70 kg (3.75 lbs)	4.5 mm (0.18 in)	incl. pressure sensor & nose assembly SFC
RBPF-20*SFC4	20 kN (4496 lbf)	37 mm/sec.	302 x 73 x 270 mm (11.88 x 2.87 x 10.63 in)	1.70 kg (3.75 lbs)	6.3 mm (0.25 in)	w/o pressure sensor & incl. nose assembly SFC
RBPF-15*HU	15 kN (3370 lbf)	47 mm/sec.	302 x 73 x 270 mm (11.88 x 2.87 x 10.63 in)	1.70 kg (3.75 lbs)	4.5 mm (0.18 in)	without nose assembly & pressure sensor
RBPF-20*HU	20 kN (4496 lbf)	37 mm/sec.	302 x 73 x 270 mm (11.88 x 2.87 x 10.63 in)	1.70 kg (3.75 lbs)	6.3 mm (0.25 in)	without nose assembly & pressure sensor

*W = Wi-Fi option

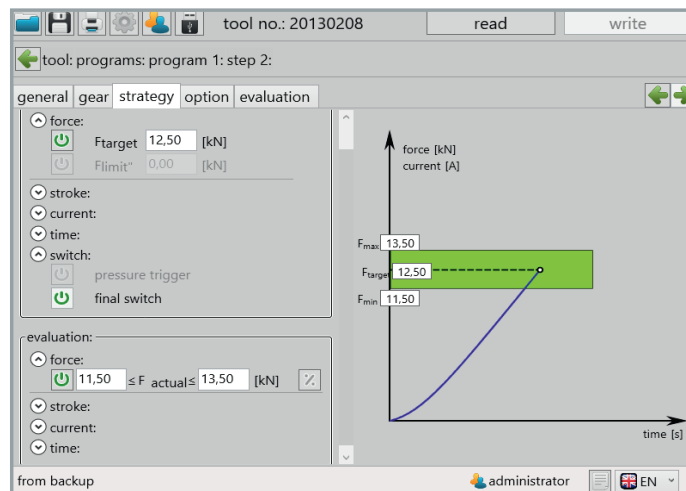
*B = Barcode reader option

*WB = Wi-Fi & barcode reader option

SFCx = SFC expander nose assembly

HU = Adapter for Huck/Arconic/Gage Bilt nose assembly**

Example of force controlled setting process



**There is no guarantee that all traction heads from the manufacturer's named will fit. Contact us for further information.
Dimensions and weights without nose assembly and battery.
Delivered without nose piece, battery and charger.

RivBee® Accessories

Compatible with RivBee® battery blind rivet tools

Model	Description	Use
040052000	Nose assembly with 60 mm, standard jaws	Blind rivet
040054000	Nose assembly 85 mm for Koenig expander	Expander 4-6 mm
040055000	Nose assembly 85 mm for Koenig expander	Expander 7-10 mm
040053000	Adapter for Huck / Arconic / Gagebilt nose assemblies**	
040052001	Standard jaws (1 set = 3 pieces), nose assembly 040052000	blind rivets 4,0-6,4 mm
040050007	Mega Grip jaws (1 set = 3 pieces), nose assembly 040052000	blind rivets 2,4-4,0 mm
040052006	Jaws for structural blind rivets, nose assembly 040052000	Monobolt, Hemlock, Magnalok, Magnabulb, Hucklok, ...

Reducing pipe



Model	Diameter	Nose assembly
040013001	1,5 - 2,4 mm	040052000
040013002	2,5 - 3,4 mm	040052000

Retaining nose pieces



The patented retention nose piece system is ideal for vertical riveting or hard to reach places because the rivet is held by the nose piece. The rivet mandrel cannot fall into the work-piece after the riveting process.

Model	max. rivet mandrel Ø	suggested min. mandrel length
HST-FHMG-24	2,4 mm	32 mm
HST-FHMG-27	2,7 mm	32 mm
HST-FHMG-29	2,9 mm	32 mm
HST-FHMG-32	3,2 mm	33 mm
HST-FHMG-36	3,6 mm	34 mm
HST-FHMG-40	4,0 mm	35 mm
HST-FHMG-45	4,5 mm	35 mm

Additional nose pieces upon request.

Standard nose pieces



Standard nose pieces are the low-cost alternative to the security nose.*

Model	max. rivet mandrel Ø	suggested min. mandrel length
HST-MG-24	2,4 mm	30 mm
HST-MG-27	2,7 mm	30 mm
HST-MG-29	2,9 mm	31 mm
HST-MG-32	3,2 mm	32 mm
HST-MG-36	3,6 mm	32 mm
HST-MG-40	4,0 mm	33 mm
HST-MG-45	4,5 mm	33 mm

Additional nose pieces upon request.

*Standard nose pieces without holding mechanism.

**There is no guarantee that all traction heads from the manufacturer's named will fit. Contact us for further information.

RivBee® Accessories

Mini tool holder, max. 42 mm

- Holder for several rivet setting tools
- Quickly and easily installed in a variety of locations
- Adjustable ergonomic inclination
- Holds tools with a diameter of up to 42 mm
- Increased safety and order in the workplace



Model	Description
HST-THS-MINI	Mini tool holder, max. 42 mm



040041000

RivBee and NutBee hanging assembly



040040000

Hanger Assembly for vertical & horizontal application



040031000

Collection container transparent



Weight: 55 g
Volume: 115 cm³

040043000

Collection container black



Weight: 55 g
Volume: 115 cm³

040042000

Collection bag



Weight: 20 g
Volume: 150 cm³

040039000

Collection bag XL



Weight: 40 g
Volume: 350 cm³

16 NutBee® LF-Series

Type designation: NBLF-xx

Force controlled battery blind rivet nut tool

-
- Force controlled setting process
 - OLED-Display
 - Quick change system
 - Blind rivet nuts M3 - M10*
 - Blind rivet bolts M3 - M10*
 - 90 selectable force levels
 - +/- 10 % force evaluation
 - Intelligent battery management
-

* up to 25 kN



17 NutBee® PF-Series

Type designation: NBPF-xx

Programmable force controlled battery blind rivet nut tool

Process documentation
(force/stroke)

Optional: Barcode reader & Wi-Fi

-
- Programmable via HST-Tool-Manager
 - Programmable parameters:
 - Force
 - Current
 - Stroke
 - Speed
 - Time
 - Process limits
 - Multi-step programming (6 steps)
 - Available setting strategies:
 - Force-controlled/stroke-monitored
 - Stroke-controlled/force-monitored
 - OLED-Display
 - Quick change system
 - Blind rivet nuts M3 - M10*
 - Blind rivet bolts M3 - M10*
 - Intelligent battery management
 - Blind rivet nut counter
 - Recovery (counter memory function)
 - 100 individual programs
 - Min. 150,000 results incl. setting curves are saved in the tool
 - Process documentation and quality assessment with force/stroke curve
 - Documentation of the date and time of each riveting process
-

* up to 25 kN

18 NutBee® LS-Series

Type designation: NBLS-xx

Stroke controlled battery blind rivet nut tool

- Stroke controlled setting process
- OLED-Display
- Quick change system
- Blind rivet nuts M3 - M10*
- Blind rivet bolts M3 - M10*
- 90 selectable stroke levels
- +/- 10 % stroke evaluation
- Intelligent battery management

* up to 25 kN



19 NutBee® PS-Series

Type designation: NBPS-xx

Programmable stroke controlled battery blind rivet nut tool

Process documentation
(current/stroke)

Optional: Barcode reader & Wi-Fi

- Programmable via HST-Tool-Manager
- Programmable parameters:
 - Current
 - Stroke
 - Speed
 - Process limits
- Multi-step programming (6 steps)
- Available setting strategies:
 - Stroke-controlled/current-monitored
 - Current-controlled/stroke-monitored
- OLED-Display
- Quick change system
- Blind rivet nuts M3 - M10*
- Blind rivet bolts M3 - M10*
- Intelligent battery management
- Blind rivet nut counter
- Recovery (counter memory function)
- 100 individual programs
- Min. 150,000 results incl. setting curves are saved in the tool
- Process documentation and quality assessment with current/stroke curve
- Documentation of the date and time of each riveting process

* up to 25 kN

NutBee® -Series

Overview

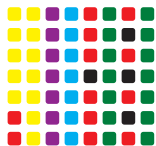
- 1 Nose assembly with mouthpiece**
- 2 OLED display for operator guidance**
- 3 Brushless motor**
for faster, powerful working,
maintenance-free
- 4 Start trigger**
- 5 Ergonomic handle**
to better guide the tool with handle
vibration alarm
- 6 USB port under the battery**
Can be programmed for your specific
application
- 7 Powerful LED**
optimum lighting even in poor lighting
conditions
- 8 Optional Wi-Fi***
Wi-Fi 2.4 & 5 GHz
- 9 Optional barcode reader***
- 10 Premium Li-Ion battery**
18 Volt 2.5 Ah / 5.0 Ah



* Not available in LF- & LS-Series.

NutBee® -Series

Features



Multicolor LED control light
Individually programmable!



Intelligent battery management
Battery level indicator and effective protection against the Li-Ion battery deep discharging.



Software HST-Tool-Manager
Intuitive and quick programming of HS-Technik power tools.



Handle vibration alarm
NOK status



OLED-Display
Visualization of setting results and tool status.



Job / Sequence*
Allows for sequences to be processed without additional controller.



Optional barcode reader integrated into the tool*
Barcodes with up to 64 characters can be read and processed.



Optional Wi-Fi for data transmission*
Connection to HST Controller.



Force sensor
Force sensor, precision class $\leq 0.5\%$, guarantees continuous documentation of the setting process with a force / stroke curve.



Recovery (counter memory function)*
Status memory for the rivet counter when changing the battery.

* Not available in LF- & LS-Series.

NutBee® -Series

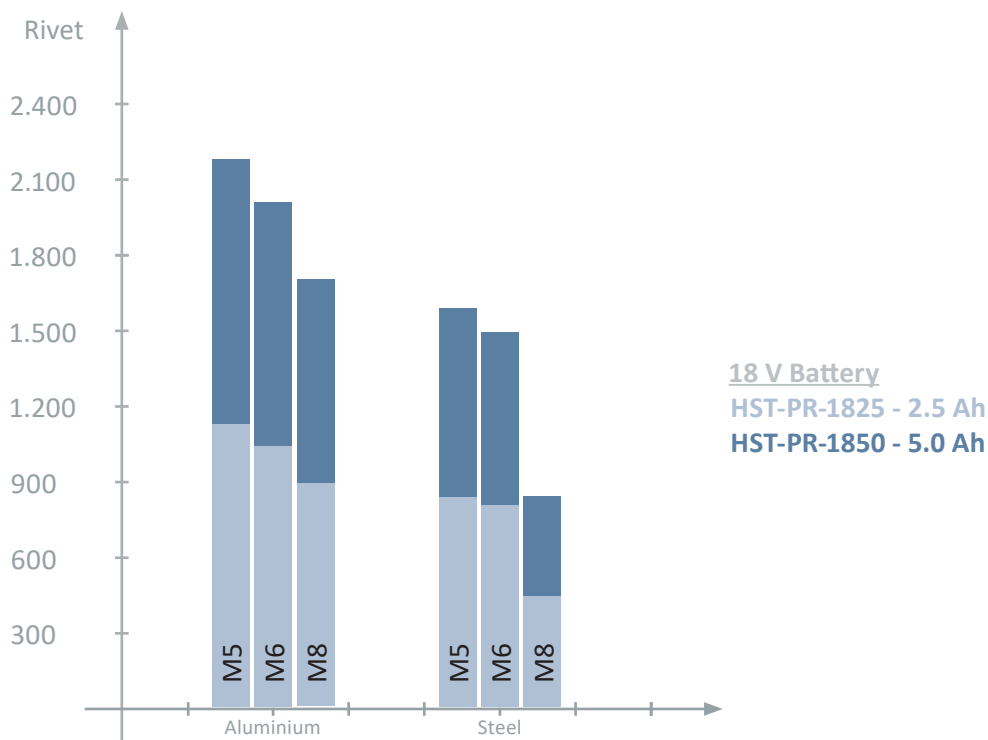
Battery life

With only one battery charge, the NutBee® series can perform up to **2,200** setting processes.

Rivet nut	Battery HST-PR-1825	Battery HST-PR-1850
M5 aluminium	1.150 pcs	2.200 pcs
M5 steel	850 pcs	1.600 pcs
M6 aluminium	1.050 pcs	2.000 pcs
M6 steel	800 pcs	1.500 pcs
M8 aluminium	900 pcs	1.700 pcs
M8 steel	450 pcs	850 pcs



Note: The number of setting processes per battery charge may deviate from the specified values depending on the blind rivet nut used.



Force setup values

According to the thread size and material of the blind rivet nut and blind rivet screw the force setup values need to be adjusted.

Thread	M3	M4	M5	M6	M8	M10
Max. step	15	22	35	50	80	90
Working time in sec.	5	5	5	5	5	5
Idle period in sec.	10	15	20	30	60	75
Working condition	1:2	1:3	1:4	1:6	1:12	1:15
Max. processes per hour	240	180	144	102	55	45
Max. processes per day	1.680	1.440	1.152	816	440	360

Values based on experience values.

NutBee® LF-Series

Force controlled battery blind rivet nut and blind rivet bolt tool

- Force-controlled setting process
- Force sensor, precision class $\leq 0.5\%$
- Controlling the setting speed based on the force
- Machine capability
+/- 7 % Cm ≥ 2.00 / Cmk ≥ 1.67
- Adjusting the setting force using buttons on the display
- Quick-change nose piece from M3 - M10*
- OK/NOK Evaluation of a force tolerance of +/- 10 % of the nominal value
- Display of the riveting results on OLED-Display (green/red smiley face)
- Handle vibration alarm
- Multi-color LED status indicator
- Intelligent battery management
- Brushless high-power motor
- LED to illuminate the setting area
- Recuperation extends the battery service time
- Updates can be installed via USB



* up to 25 kN

Technical data

Model	max. setting force	max. setting stroke	Dimensions L x W x H	Weight
NBLF-25	25 kN (5620 lbf)	21 mm (0.83 in)	212 x 73 x 270 mm (8.35 x 2.87 x 10.63 in)	2.00 kg (4.41 lbs)

Delivered without nose piece and threaded mandrel.
Dimensions and weight indications without battery.
At usage above 20 kN limited warranty. Contact us for further details.

NutBee® PF-Series

Programmable force controlled battery blind rivet nut and blind rivet bolt tool

All NutBee® LF-Series features plus:

- **Process and quality documentation with force/stroke curve**
- **Multi-step programming**
 - Force
 - Stroke
 - Speed
 - Time
 - Process limits
- **Blind rivet nut counter**
- **Recovery (counter memory function)**
- **100 individual programs**
- **Min. 150,000 results incl. setting curves are saved in the tool**
- **Optional: Barcode reader and Wi-Fi**



Technical data

Model	max. setting force	max. setting stroke	Dimensions L × W × H	Weight
NBPF-25*	25 kN (5620 lbf)	21 mm (0.83 in)	212 × 73 × 270 mm (8.35 × 2.87 × 10.63 in)	2.00 kg (4.41 lbs)

*W = Wi-Fi option

*B = Barcode reader option

*WB = Wi-Fi & barcode reader option

Delivered without nose piece and threaded mandrel.
Dimensions and weight indications without battery.
At usage above 20 kN limited warranty. Contact us for further details.

NutBee® LS-Series

Stroke controlled battery blind rivet nut and blind rivet bolt tool

- Stroke-controlled setting process
- Controlling the setting speed based on the setting stroke
- Machine capability
+/- 10 % Cm \geq 2.00 / Cmk \geq 1.67
- Adjusting the stroke using buttons on the display
- Quick-change nose piece from M3 - M10*
- Evaluation of a stroke tolerance of +/- 10 % of the nominal value
- Display of the riveting results on OLED-Display (green/red smiley face)
- Handle vibration alarm
- Multi-color LED status indicator
- Intelligent battery management
- Brushless high-power motor
- LED to illuminate the setting area
- Recuperation extends the battery service time
- Updates can be installed via USB



* up to 25 kN

Technical data

Model	max. setting stroke	Dimensions L x W x H	Weight
NBLS-21	21 mm (0.83 in)	212 x 73 x 270 mm (8.35 x 2.87 x 10.63 in)	2.00 kg (4.41 lbs)

Delivered without nose piece and threaded mandrel.
Dimensions and weight indications without battery.
At usage above 20 kN limited warranty. Contact us for further details.

NutBee® PS-Series

Programmable stroke controlled battery blind rivet nut and blind rivet bolt tool

All NutBee® LS-Series features plus:

- **Process and quality documentation with current/stroke curve**
- **Multi-step programming**
 - Stroke
 - Current
 - Speed
 - Time
 - Process limits
- **Blind rivet nut counter**
- **Recovery (counter memory function)**
- **100 individual programs**
- **At least 150,000 results incl. setting curves are saved in the tool**
- **Optional: Barcode reader and Wi-Fi**



Technical data

Model	max. setting stroke	Dimensions L × W × H	Weight
NBPS-21*	21 mm (0.83 in)	212 × 73 × 270 mm (8.35 × 2.87 × 10.63 in)	2.00 kg (4.41 lbs)

*

W = Wi-Fi option

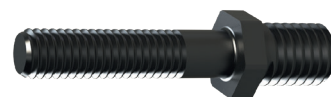
B = Barcode reader option

WB = Wi-Fi & barcode reader option

Delivered without nose piece and threaded mandrel.
Dimensions and weight indications without battery.
At usage above 20 kN limited warranty. Contact us for further details.

NutBee® Accessories

Threaded mandrel standard for blind rivet nut applications (2)



NRIV-GM6

Threaded mandrel (2)	Description		Mouthpiece (1)
NRIV-GM3	NutBee threaded mandrel M3	for blind rivet nuts	NRIV-MM3
NRIV-GM4	NutBee threaded mandrel M4	for blind rivet nuts	NRIV-MM4
NRIV-GM5	NutBee threaded mandrel M5	for blind rivet nuts	NRIV-MM5
NRIV-GM6	NutBee threaded mandrel M6	for blind rivet nuts	NRIV-MM6
NRIV-GM8	NutBee threaded mandrel M8	for blind rivet nuts	NRIV-MM8
NRIV-GM10	NutBee threaded mandrel M10	for blind rivet nuts	NRIV-MM10
NRIV-GM12	NutBee threaded mandrel M12	for blind rivet nuts	NRIV-MM12

Threaded mandrel with guiding tip for blind rivet nut applications (2)



NB-GM6

Threaded mandrel (2)	Description		Mouthpiece (1)
NB-GM5	NutBee threaded mandrel M5	with guiding tip for blind rivet nuts	NRIV-MM5
NB-GM6	NutBee threaded mandrel M6	with guiding tip for blind rivet nuts	NRIV-MM6
NB-GM8	NutBee threaded mandrel M8	with guiding tip for blind rivet nuts	NRIV-MM8

Threaded mandrels and mouthpieces in special length upon request



comparison between NRIV-GM (left) and NB-GM (right)

Accessories

Threaded sleeve for blind rivet bolt applications (3)

Threaded sleeve (3)	Description	Mouthpiece (1)
NRIV-HM3	NutBee threaded sleeve M3 for blind rivet bolts	NRIV-MM4
NRIV-HM4	NutBee threaded sleeve M4 for blind rivet bolts	NRIV-MM5
NRIV-HM5	NutBee threaded sleeve M5 for blind rivet bolts	NRIV-MM6
NRIV-HM6	NutBee threaded sleeve M6 for blind rivet bolts	NRIV-MM8
NRIV-HM8	NutBee threaded sleeve M8 for blind rivet bolts	NRIV-MM10
NRIV-HM10	NutBee threaded sleeve M10 for blind rivet bolts	NRIV-MM12

A conversion kit is required to convert from the version for rivet nuts to rivet bolts.



Conversion kits to convert from the version for rivet nuts to rivet bolts

Model	Description
NB-BRB-SET-D5	NutBee conversion kit blind rivet bolt coarse thread D5
NB-BRB-SET-D6	NutBee conversion kit blind rivet bolt coarse thread D6
NB-BRB-SET-M4	NutBee conversion kit blind rivet bolt M4
NB-BRB-SET-M5	NutBee conversion kit blind rivet bolt M5
NB-BRB-SET-M6	NutBee conversion kit blind rivet bolt M6
NB-BRB-SET-M8	NutBee conversion kit blind rivet bolt M8

NutBee® Accessories

Mini tool holder, max. 42 mm

- Holder for several rivet setting tools
- Quickly and easily installed in a variety of locations
- Adjustable ergonomic inclination
- Holds tools with a diameter of up to 42 mm
- Increased safety and order in the workplace



Model	Description
HST-THS-MINI	Mini tool holder, max. 42 mm



040041000

RivBee and NutBee hanging assembly



040040000

Hanger Assembly for vertical & horizontal application



Accessories

Battery and charger

Battery

	HST-PR-1825	HST-PR-1850
Voltage	18 V	18 V
Capacity	2.5 Ah	5.0 Ah
Compatible with	TorqBee-Series, NutBee-Series, RivBee-Series and more	
Weight	350 g	600 g

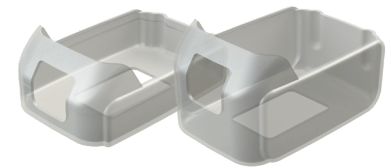


HST-PR-1825

HST-PR-1850

Battery cover

Model	Suitable for battery
Cover-1825	HST-PR-1825
Cover-1850	HST-PR-1850



Cover-1825

Cover-1850

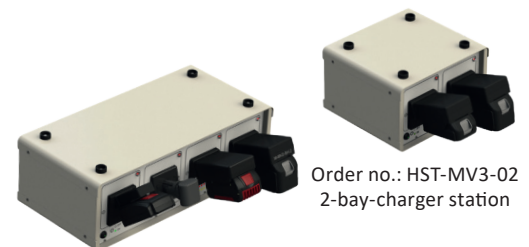
HST-PR-2830 (Single charger)

	HST-PR-2830 / HST-PR-2830-USA
Input	220 - 240 V AC, 50 - 60 Hz / 110 V AC, 50 - 60 Hz
Charging current	3 A
Output	max. 21 V
Charging time	max. 55 min with 2.5 Ah battery
Shut-off criteria	ΔU , temperature shut-off
Weight	approx. 550 g
Dimensions W × H × D	approx. 85 × 110 × 155 mm



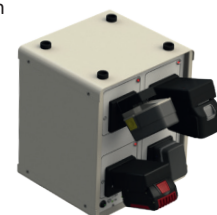
HST-MV3 (Multi-bay-charger)

	HST-MV3-02 / HST-MV3-04 / HST-MV3-04W	
Input	85 - 260 V AC, 47 - 63 Hz	
Power output	max. 624 W	
Efficiency	> 89 %	
Output	56 V / 624 VA	
Power supply ventilator	$\leq 45^{\circ}\text{C}$ (OFF) $\geq 50^{\circ}\text{C}$ (ON)	
Weight	HST-MV3-02	ca. 4.7 kg
	HST-MV3-04	ca. 7.6 kg (Row)
	HST-MV3-04W	ca. 7.6 kg (Cube)
Dimensions W × H × D without battery adapter, incl. feet	HST-MV3-02	289 × 182 × 260 mm
	HST-MV3-04	539 × 182 × 260 mm
	HST-MV3-04W	289 × 330 × 260 mm
Tested	CE, EN55022B, EN61000-3-2,-3, EN61000-4-2, 3, 4, 5, 6, 8, 11 EN60950	



Order no.: HST-MV3-02
2-bay-charger station

Order no.: HST-MV3-04
4-bay-charger station
row form



Order-no.: HST-MV3-04W
4-bay-charger station
cube form

Accessories

HST-MV3-Battery adapters

The specifications of the battery cell manufacturers and the specifications of the battery pack from each manufacturer are taken into account in the charging process.

Order no.	For battery types	
M-MV3-PR	HS-Technik HST-PR	14.4 & 18 V Li-Ion
M-MV3-BH	Makita Makstar (BL) Makita Makstar (BH) HST-BL HST-BH	14.4 & 18 V Li-Ion 9.6 - 24 V Ni-MH 14.4 & 18 V Li-Ion 9.6 - 24 V Ni-MH
M-MV3-BO-LI	Bosch	14.4 & 18 V Li-Ion
M-MV3-BO-10	Bosch	10.8 V Li-Ion
M-MV3-BO-NI	Bosch	7.2 - 18 V Ni-Cd & Ni-MH
M-MV3-FEIN	Fein ASM / ASW	10.8 / 14.4 / 18 V Li-Ion
M-MV3-CPN	Atlas Copco Desoutter	18 & 36 V Li-Ion (before 2021 3-pole batteries) 18 & 36 V Li-Ion (before 2021 3-pole batteries)
M-MV3-Cleco	Apex Cleco Power Tools	26 & 44 V Li-Ion
M-MV3-AC30	Atlas Copco	18 & 30 V Li-Ion
M-MV3-UNI	Makita Bosch Gesipa Gesipa	7.2 - 24 V Ni-Cd & Ni-MH 7.2 - 18 V Ni-Cd & Ni-MH 12 V Ni-Cd & Ni-MH 14.4 V Li-Ion
M-MV3-GE	Gesipa	18 V Li-Ion
M-MV3-PA-36	Panasonic	3.6 V Li-Ion
M-MV3-PA-LI	Panasonic	10.8 / 14.4 / 18 V Li-Ion
M-MV3-PA-72	Panasonic	7.2 V Li-Ion
M-MV3-IR	Ingersoll Rand	20 & 40 V Li-Ion
M-MV3-SCS	SCS	3.6 V
M-MV3-DES	Desoutter	18 & 36 V Li-Ion (since 2021 with electronic)

Example pictures:



M-MV3-PR



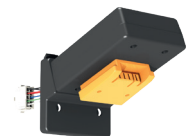
M-MV3-BH



M-MV3-BO-LI



M-MV3-BO-10



M-MV3-FEIN



M-MV3-CPN



M-MV3-UNI



M-MV3-PA-LI



M-MV3-PA-36

If you require battery adapters for older charging stations, please contact us.
Additional battery adapters upon request.



HS-Technik GmbH

High - System - Technik

Im Martelacker 12
D-79588 Efringen-Kirchen
Phone: +49 (0) 76 28 - 91 11-0
Fax: +49 (0) 76 28 - 91 11-90
E-mail: info@hs-technik.com
Internet: www.hs-technik.com

© Copyright May 2022

Subject to modifications and errors. All figures are non-binding.

We reserve the right to make technical changes to our products and the range of products as a result of further development.

Reproduction and the use of texts, even excerpts of our brochures is prohibited and will be prosecuted.