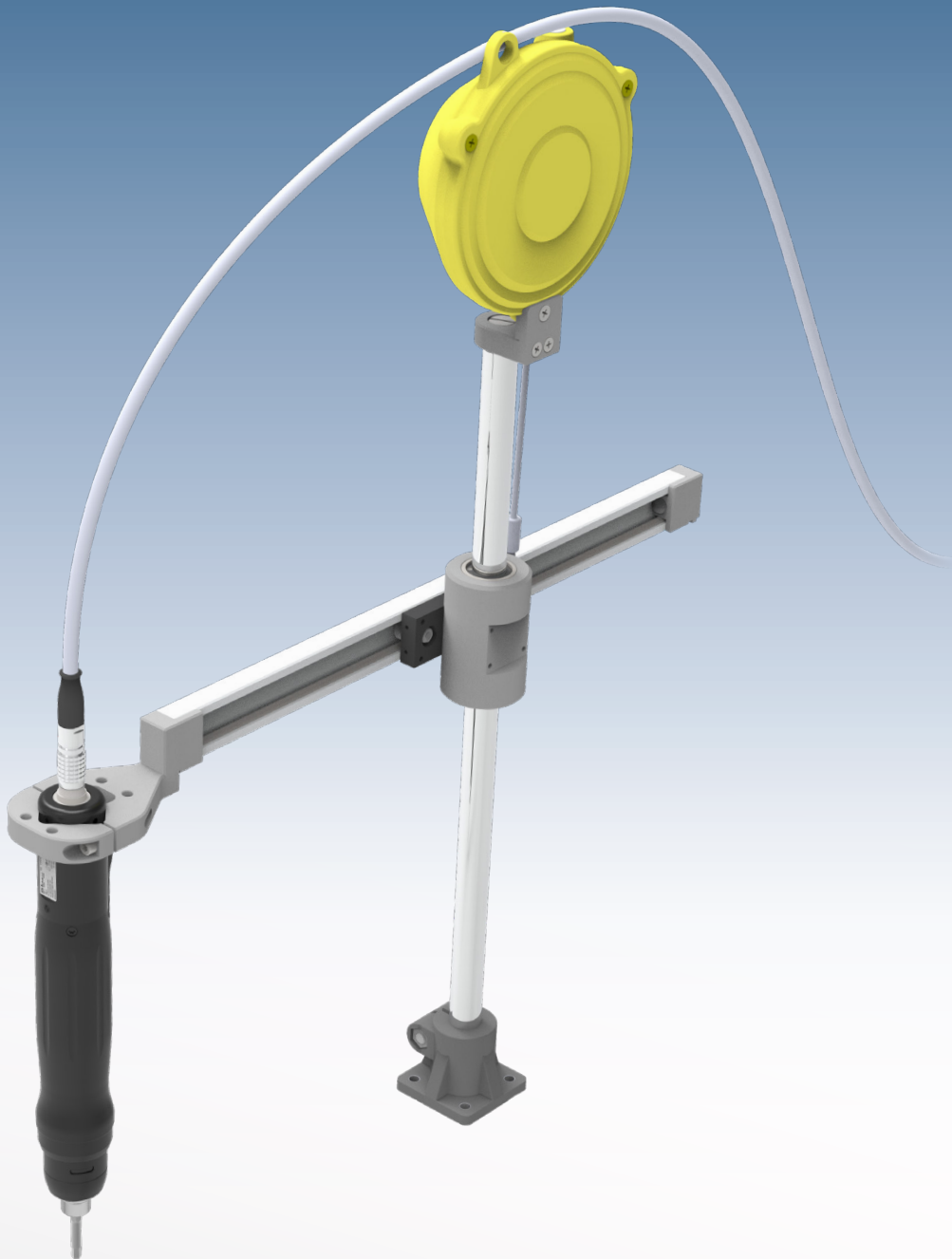


# TBe-Series

Electric EC screwdriver  
with torque transducer & angle encoder



Your distributor

MADE IN GERMANY



Premium Power Tools



**HS-Technik** GmbH  
High - System - Technik

# TBe-Series

## Overview

- EC screwdriver with torque transducer and angle encoder of highest quality and with highest accuracy (calibrated at +/-1% of the nominal value)
- Torque ranges from 0.1 - 10 Nm
- 4 programs, in C-version 32 programs
- Ergonomically shaped aluminium housing, ESD-compatible
- Push and lever start
- Brushless motor technology
- Modular system, can be expanded at any time
- Industry 4.0 capable



1/4" Hexagon Drive  
Insertion Depth 16mm



# TBe-Series

## Model selection

### TBe-x - Series

- Electric EC screwdriver with 4 programmes
- No controller necessary
- Screwdriver cable 3 metres

- USB interface for programming and parametrization
- TBe-Manager included

Order no.	Torque range	Speed	Drive	Length	Diameter	Clamping-diameter	Weight
TBe-1	0.1 - 1.0 Nm	50 - 1,300 U/min	1/4" hex	279 mm	42 mm	36 mm	0.88 kg
TBe-5	0.5 - 5.0 Nm	50 - 600 U/min	1/4" hex	279 mm	42 mm	36 mm	0.88 kg
TBe-10	1.0 - 10.0 Nm	20 - 400 U/min	1/4" hex	335 mm	48 mm	40 mm	1.20 kg



Scope of delivery TBe-x-Series

### TBe-xC - Series

- Electric EC screwdriver with controller and 32 programs
- The Driver Cable 3 meters
- The Driver Cable 2 meters
- USB interface for programming and parametrization

- TBe-Manager included in scope of delivery
- Extended interfaces
- Optional hardware available (bit selector, linear arm, scanner, ...)
- Optional worker guidance

Order no.	Torque range	Speed	Drive	Length	Diameter	Clamping-diameter	Weight
TBe-1C	0.1 - 1.0 Nm	50 - 1,300 U/min	1/4" hex	279 mm	42 mm	36 mm	0.88 kg
TBe-5C	0.5 - 5.0 Nm	50 - 600 U/min	1/4" hex	279 mm	42 mm	36 mm	0.88 kg
TBe-10C	1.0 - 10.0 Nm	20 - 400 U/min	1/4" hex	335 mm	48 mm	40 mm	1.20 kg

2 x (2 m, 3 m)



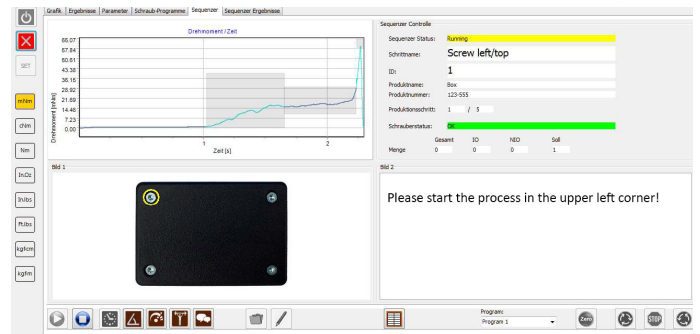
Scope of delivery TBe-xC-Series

# TBe-Series

## Optional hardware

### TBe-Manager Pro

- Visualisation of the assembly process with up to 200 work process steps
- Selection of tightening & other assembly operations
- Documentation of each step



Example instructions to the operator during a bolting step

Article number	Description
----------------	-------------

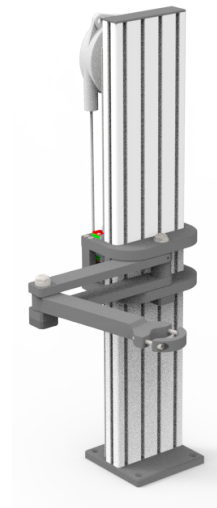
TBe-Manager-Pro	Screwdriving system software with Operator guidance
-----------------	---

### Linear arm with position monitoring

- Release of the screwdriving system at defined coordinates
- Teaching of the arm in worker guidance mode
- Absorption of the reaction torque for improved ergonomics
- Can only be used in combination with TBe-BPC and TBe-Manager-Pro

Article number	Description
----------------	-------------

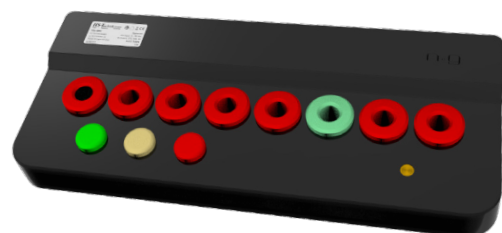
Posi-fix-400	Linear arm with position monitoring
--------------	-------------------------------------



Linear arm with position monitoring

### Bit selector

- Pick by Light
- Up to 8 different screw bits
- Can only be used in combination with the TBe-Manager-Pro



8-bay Bit selector for TBe-Series

Article number	Description
----------------	-------------

TBe-BPC	8-bay Bit selector for TBe-Series
---------	-----------------------------------

# TBe-Series Accessories

easy-linearfix / easy-linearfix-BIG

## easy-linearfix / easy-linearfix-BIG

- Suitable for tightening, drilling, thread cutting
- Quick and safe positioning
- Quick tool change
- Flexible
- Order and safety in the workplace
- Easy running thanks to recirculating ball bearings
- Can be turned by 360°
- Absorption of the screwdriver weight
- Easy handling
- No backing forces
- Exhaustion-free work



easy-linearfix-B with stops

## Technical Data

Order no.	Working radius (Extension length)	Screwdriver weight	Working height	Torque max.	Tool holder included
EASY-LINEARFIX	130 - 460 mm	0.5 - 2.5 kg	60 - 430 mm	max. 15 Nm	HST-EPF-H45
EASY-LINEARFIX-600	130 - 600 mm	0.5 - 2.5 kg	60 - 430 mm	max. 15 Nm	HST-EPF-H45
EASY-LINEARFIX-700	130 - 700 mm	0.5 - 2.5 kg	60 - 430 mm	max. 15 Nm	HST-EPF-H45
EASY-LINEARFIX-750	130 - 750 mm	0.5 - 2.5 kg	60 - 430 mm	max. 15 Nm	HST-EPF-H45
EASY-LINEARFIX-B	160 - 500 mm	0.5 - 2.5 kg	60 - 430 mm	max. 25 Nm	HST-EPF-H45
EASY-LINEARFIX-B-800	160 - 800 mm	0.5 - 2.5 kg	60 - 430 mm	max. 25 Nm	HST-EPF-H45
EASY-LINEARFIX-B-900	160 - 900 mm	0.5 - 2.5 kg	60 - 430 mm	max. 25 Nm	HST-EPF-H45
EASY-LINEARFIX-B-1000	160 - 1,000 mm	0.5 - 2.5 kg	60 - 430 mm	max. 25 Nm	HST-EPF-H45

# TBe-Series Accessories

## Carbon torque arms TAC Series

Carbon torque arms  
- optimized for industrial applications

- Holds up to 15 Nm
- 2 axis precise positioning of the screw
- Improved ergonomics, results in less exhaustion of the operator
- Smooth-running through high quality components
- Minimal weight
- Maintenance-free
- Very robust, thanks to the best quality of carbon fibre
- Absorption of weight and reaction force
- Suitable for different tools



### Horizontal application

Order no.	Length min.	Length max.	Torque max.	Tool holder included
TAC-10-1000	495 mm	1,105 mm	10 Nm	Yes
TAC-10-1500	665 mm	1,605 mm	10 Nm	Yes
TAC-15-1000	486 mm	1,066 mm	15 Nm	-
TAC-15-1500	646 mm	1,556 mm	15 Nm	-
TAC-15-2000	806 mm	2,046 mm	15 Nm	-

# TBe-Series Accessories

## Carbon torque arms TAC Series

### Basic Tool Holder

Order no.	no.	Tool grip		Description	Compatible with
		ø min	ø max		
TAC-15-BTH	2	27 mm	45 mm	Basic Tool Holder with 2 screws	TAC-15



### Multi-position tool holder

Order no.	no.	Tool grip		Description	Compatible with
		ø min	ø max		
TAC-15-MTH-INT	1	n/a	n/a	Multi-position tool holder interface	TAC-15
TAC-15-MTH	2	27 mm	45 mm	Multi-position tool holder	TAC-15
MTH-EXT-90	3	n/a	n/a	Extension 90 mm for Multi-position tool holder	TAC-15



# TBe-Series Accessories

## Floating balancer TSB

- Tools can be hung up weightlessly (floating)
- Allows precise work
- Protects tools against damage and soiling
- Allows rational work
- Carrying capacity of 0.5 - 3 kg



## Technical data

Order no.	Weight	Carrying capacity	Diameter	Height	Cable pull-out
TSB-00	0.2 kg	0.5 - 1.5 kg	128 mm	237 mm	500 mm
TSB-0	0.5 kg	0.5 - 1.5 kg	128 mm	237 mm	1,000 mm
TSB-03	1.4 kg	1.0 - 3.0 kg	148 mm	290 mm	1,300 mm



# TBe-Series Accessories

## Automatic screw feeders FK Series

### For small screws in the production environment

- For nine different screw diameters
- Various screw head shapes can be used
- Screw length max. 18 mm
  - FK-xxx  
for standard screws



## Technical Data

<b>Order no.</b>	<b>FK-505 Series</b>
<b>Input</b>	100 - 240 V, 50/60Hz, 15 VA
<b>Output</b>	DC 12 V, 200 mA
<b>DC plug</b>	EIAJ Type
<b>Dimensions (L x W x H)</b>	120 x 155 x 138 mm
<b>Weight (basic unit)</b>	FK-505: 1.1 kg
<b>Screw capacity / Screw provision</b>	approx. 1,5 sec. for a screw
<b>Screw length max.</b>	18 mm
<b>Screw conveyance</b>	Inclined plane (fixed rail width)
<b>Work environment</b>	+10 ~ +30°C (no condensation)
<b>Storage temperature</b>	-10 ~ +50°C (no condensation)
<b>Noise level</b>	66 dB
<b>Operating environment</b>	Use exclusively in dry rooms

# TBe-Series Accessories

## Automatic screw feeders FK Series

Order no.	∅ Screw diameter	Screw length (min.)	Screw length with spring disk (min.)	Screw length with spring disk and washer (min.)
FK 514	M1.4	1.4 mm	-	-
FK 517	M1.7	1.6 mm	-	-
FK 520	M2.0	1.8 mm	3.0 mm	5.0 mm
FK 523	M2.3	2.5 mm	4.0 mm	5.0 mm
FK 526	M2.6	2.8 mm	4.0 mm	6.0 mm
FK 530	M3.0	3.0 mm	4.0 mm	6.0 mm
FK 535	M3.5	3.5 mm	6.8 mm	8.0 mm
FK 540	M4.0	4.0 mm	6.8 mm	8.0 mm
FK 550	M5.0	5.0 mm	8.0 mm	10.0 mm

<b>Appropriate screws</b>	<b>9 different screw diameters</b>
<b>Screw type, material</b>	Metric screws plate and plastic, iron or magnetic material
<b>Shape of the screws</b>	Flat head, button-head, mushroom head bolt, round and flat-head screws, WH, with spring screw and washer

# TBe-Series Accessories

## Automatic screw feeders NJ / NJR Series

### NJ-Series

- Screwdriver can be used with standard bit and suction equipment
- Special screws can be used (also screws with washers or spring washers)
- Various expansion containers available
- Thanks to exchangeable rails, different screw sizes are supported

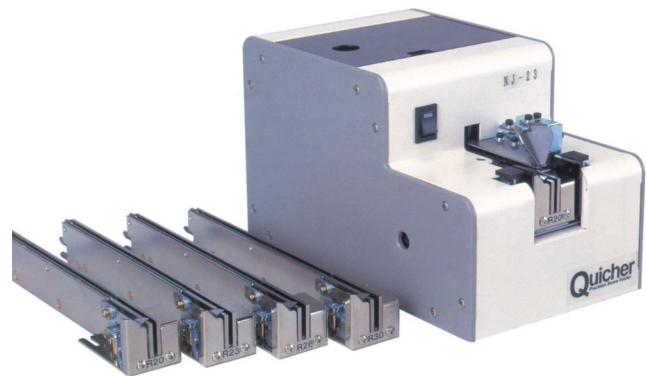
### NJR-Series

- Special screws can be used (also screws with washers or spring washers)
- Robot operation
- Smooth production flow
- Signal for missing screw on the screw holder
- Various expansion holders available

### Complements the Quicher series:

#### NJ-45

- Automatic screw feeder for vacuum take-up of the screws (allows automation with miniature screws)



## Technical Data

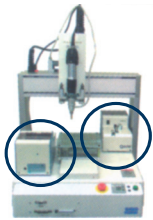
	NJ-Series	NJR-Series
<b>Input</b>	AC 230V	AC 230V
<b>Output</b>	DC 12 V, 500 mA	DC 12 V, 500 mA
<b>Power connection</b>	AC power supply	AC power supply
<b>Dimensions (L x W x H)</b>	130 x 215 x 136 mm	130 x 275 x 136 mm
<b>Weight (with rail)</b>	approx. 3.2 kg	approx. 4.2 kg
<b>Chamber capacity</b>	approx. 150 screws	approx. 150 screws
<b>Guard</b>	Motor stop in case of overload and safety switch	Motor stop in case of overload and safety switch

# TBe-Series Accessories

## Automatic screw feeders NJ / NJR Series

Order no.	Screw diameter	Appropriate rail	Max. screw length
HST-NJ-2320	M2.0	HST-NJ-R20	18.0 mm
HST-NJ-2323	M2.3	HST-NJ-R23	18.0 mm
HST-NJ-2326	M2.6	HST-NJ-R26	18.0 mm
HST-NJ-2330	M3.0	HST-NJ-R30	18.0 mm
HST-NJ-4535	M3.5	HST-NJ-R35	18.0 mm
HST-NJR-4540	M4.0	HST-NJ-R40	18.0 mm
HST-NJR-4550	M5.0	HST-NJ-R50	18.0 mm

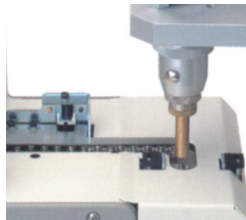
Order no.	Screw diameter	Appropriate rail	Max. screw length
HST-NJR-2320	M2.0	HST-NJ-RR20	18.0 mm
HST-NJR-2323	M2.3	HST-NJ-RR23	18.0 mm
HST-NJR-2326	M2.6	HST-NJ-RR26	18.0 mm
HST-NJR-2330	M3.0	HST-NJ-RR30	18.0 mm
HST-NJR-4535	M3.5	HST-NJ-RR35	18.0 mm
HST-NJR-4540	M4.0	HST-NJ-RR40	18.0 mm
HST-NJR-4550	M5.0	HST-NJ-RR50	18.0 mm



NJR with robot



Screw removal (Hand)



Screw removal (Robot)



Expansion container









# **HS-T***echnik* GmbH

**High - System - Technik**

Im Martelacker 12

D-79588 Efringen-Kirchen

Phone: +49 (0) 76 28 - 91 11-0

Fax: +49 (0) 76 28 - 91 11-90

E-mail: [info@hs-technik.com](mailto:info@hs-technik.com)

Internet: [www.hs-technik.com](http://www.hs-technik.com)

© Copyright May 2023

Subject to modifications and errors. All figures are non-binding.

We reserve the right to make technical changes to our products and the range of products as a result of further development.

Reproduction and the use of texts, even excerpts of our brochures is prohibited and will be prosecuted.