

# OPERATING INSTRUCTIONS

---

## HST-MV3

- Original operating instructions -



### NOTE

In case of doubt, the original German version of the operating instructions applies.

### Charging station

**HST-MV3-02 / -04 / -04W**

Issue date:

June 2021

PC software

2.0.2.25 and higher

Firmware:

1.0.1.5 and higher

# Table of contents

PAGE	<b>4</b>	<b>1 Operating principles</b>	
		1.1	Scope of delivery 4
		1.2	General information 4
		1.3	Structure of the warnings 5
		1.4	Intended use 6
		1.5	Improper use 6
		1.6	FCC compliance 7
		1.7	Guarantee and liability 7
		1.8	Copyright 8
PAGE	<b>9</b>	<b>2 Basic safety instructions</b>	
		2.1	Notices in the operating instructions 9
		2.2	Operator's responsibility 9
		2.2.1	Personnel's responsibility 9
		2.2.2	Personnel training 9
		2.3	Risks when working with the charging station 9
		2.4	Danger from electrical energy 10
		2.5	Workplace safety 10
		2.6	Electrical safety 11
		2.7	Service 11
		2.8	Lithium-ion battery 11
		2.9	Cleaning and disposal 13
		2.10	Set-up 14
		2.11	Power supply 14
		2.12	Structure 15
PAGE	<b>16</b>	<b>3 Start-up and use</b>	
		3.1	Benefits 16
		3.2	Additional information 16
		3.2.1	Charging process 17
		3.2.2	Explanation of the LED signals / functions 18
		3.2.3	Sleep function 19
		3.3	Safety functions and special features 19
		3.4	Software 20
		3.5	Shut-off criteria 21
PAGE	<b>22</b>	<b>4 Technical data</b>	
PAGE	<b>23</b>	<b>5 Battery adapter</b>	
		5.1	Changing the battery adapter 25

PAGE	<b>27</b>	<b>6 Drawings</b>	
	6.1	4-bay charger station row form (HST-MV3-04)	27
	6.2	4-bay charger station cube form (HST-MV3-04W)	27
	6.3	2-bay charger station (HST-MV3-02)	28

---

PAGE	<b>29</b>	<b>7 Spare parts list</b>	
------	-----------	---------------------------	--

---

PAGE	<b>30</b>	<b>CE Declaration of conformity</b>	
------	-----------	-------------------------------------	--

---

# 1 Operating principles

---

Dear customers,

thank you for choosing a HS-Technik GmbH product.

This quality product „Made in Germany“ fulfils the highest requirements with regard to performance, quality and accuracy. When used correctly the product will undoubtedly perform very well for many years.

These operating instructions contain information on safety and for the operation of the charger. In addition it contains information on the dimensions and technical data. We would be happy to assist you with additional information or to answer your questions. Our technical support and our technicians would be happy to assist you.

## 1.1 Scope of delivery

- Charging station
- Power supply cord
- Operating instructions

## 1.2 General information

Read the operating instructions before initial operation. **Please pay particular attention to Chapter 2 „General Safety Notes“.**

This operating instruction should make it easier for the operator to get to know the charger and to use it for its intended purpose. The operating instructions include important information related to the safe and proper operation of the charger. Compliance with these instructions helps you to:

- Avoid hazards
- Avoid repair costs and downtimes
- Increase the reliability and the lifespan of the product.

This operating instructions must be read and applied by every person who is assigned to conduct work using this charger.

In addition to these operation instructions the applicable regulations on accident prevention and environmental protection should be observed.



#### **NOTE**

After reading, keep the operating instructions in a place accessible to every operator. If you have any further questions, please feel free to contact us.

### **1.3 Structure of the warnings**

The warnings are structured as follows:



#### **DANGER**

Indicates an immediate dangerous situation that can lead to serious or even deadly injuries and/or that could seriously damage or even destroy the charger.



#### **WARNING**

Indicates a potentially dangerous situation that can lead to serious injuries and/or damage to the charger.



#### **NOTE**

Important and useful information on using this charger.

## 1.4 Intended use

The charging station may only be used as described in these instructions, to charge batteries suitable for the type of charging station.



### WARNING

Intended use also includes

- following all indications of the operating instructions and
- observance of inspection and maintenance works.

Any other use or use beyond that is considered improper use. HS-Technik GmbH is not liable for any damage resulting from this.



### NOTE

These charging stations are solely suitable for charging Ni-Cd, Ni-MH and Li-Ion batteries (nominal voltage 3.6 - 43.2 V).

Not suitable for all battery types!

On page 23, you will find the corresponding battery adapter and its charging functions.

## 1.5 Improper use

We accept no liability for damage and malfunctions resulting from non-observance of these operating instructions and improper use.

## 1.6 FCC compliance

Changes or modifications not expressly approved by HS-Technik could void the user's authority to operate the equipment.

This equipment has been tested and found to comply with the limits for a Class A digital device, pursuant to part 15 of the FCC Rules. These limits are designed to provide reasonable protection against harmful interference when the equipment is operated in

a commercial environment. This equipment generates, uses, and can radiate radio frequency energy and, if not installed and used in accordance with the instruction manual, may cause harmful interference to radio communications. Operation of this equipment in a residential area is likely to cause harmful interference in which case the user will be required to correct the interference at his own expense.

## **1.7 Guarantee and liability**

Guarantee and liability claims for personal injury and property damage are excluded, if caused by one or more of the following:

- improper use
- failure to observe these operating instructions
- improper installation, commissioning, operation and maintenance of the device
- Operating the device with defective safety devices or improperly installed, or non-functioning safety and protective devices
- Failure to observe the information in the operating instructions regarding transport, storage, assembly, commissioning, operation and maintenance of the device
- unauthorised structural modifications to the device
- improperly performed repairs
- catastrophes due to external influences and acts of God

## 1.8 Copyright

These operating instructions are intended solely for the operator and its personnel.

They contain guidelines and information which may not be fully, or partially

- reproduced
- distributed or
- otherwise shared.

The copyright of these operating instructions is retained by HS-Technik GmbH.

Manufacturer's address:

**HS-Technik GmbH**  
High - System - Technik

Im Martelacker 12  
D-79588 Efringen-Kirchen

Telephone: +49 (0)7628 - 91 11-0  
Fax: +49 (0)7628 - 91 11-90  
E-mail: [info@hs-technik.com](mailto:info@hs-technik.com)  
Internet: [www.hs-technik.com](http://www.hs-technik.com)



## **2 Basic safety instructions**

---

### **2.1 Notices in the operating instructions**

The basic requirement for safe and proper use and fault-free operation is knowledge of the basic safety instructions and safety regulations. In addition, the rules and regulations for the place of use must be followed.

### **2.2 Operator's responsibility**

The operator is obligated to only allow persons to work with this charging station who are familiar with the basic regulations for work safety and accident prevention and are trained in how to use the charging station. Safety-conscious work of the personnel must be checked at regular intervals.

#### **2.2.1 Personnel's responsibility**

All persons working with this charging station are obligated to comply with the basic regulations for work safety and accident prevention prior to starting work.

#### **2.2.2 Personnel training**

Only trained and qualified personnel may work with this charging station. The responsibilities of the personnel for the assembly, commissioning, operation, maintenance and servicing must be clearly defined. Personnel-in-training may only operate the charging station in the presence of an experienced person.

### **2.3 Risks when working with the charging station**

Faults that may hinder safety must be immediately rectified.



### WARNING

The charging station was built in accordance with the state of the art in technology and the approved safety regulations. Still, when using it, risks to life and limb of the user or third parties can arise.



### WARNING

Only use the charging station

- for the proper intended use
- in working order with regards to safety

## 2.4 Danger from electrical energy



### DANGER

Only allow a qualified electrician to perform work on this charging station. The electrical equipment of the charging station must be regularly inspected. Loose connections and charred cables must be immediately repaired. If work on the charging station is necessary, the device must be disconnected from the power supply prior to opening it.



### WARNING

The charging station must be kept closed at all times. Access to internal parts is only permitted for authorized persons.

## 2.5 Workplace safety

- Keep your workspace clean and well lit.** Disorder or poorly lit workspaces can lead to accidents.
- Do not use the charging station in an explosive environment,** in which flammable liquids, gases or dusts are located.
- Take environmental influences into account.** Never subject charging stations to rain. Do not use charging stations in moist or wet environments.

## 2.6 Electrical safety

- a) **Avoid physical contact with grounded surfaces such as pipes, radiators, etc.** There is an increased risk due to electrical shock, if your body is grounded.
- b) **Keep the device away from rain or moisture.** Water penetrating into charging station increases the risk of an electrical shock.
- c) **Keep the charging station away from heat, oil, sharp edges or moving device parts.**

## 2.7 Service



### NOTE

Only allow your charging station to be repaired by a qualified technician using only original replacement parts, available from HS-Technik GmbH. This ensures that the safety of your device is maintained.

## 2.8 Lithium-ion battery



### NOTE

Please make sure to follow the following instructions for using lithium-ion batteries!

- a) **Only charge the batteries in suitable chargers** if the battery is not used in a suitable charger, it may be permanently damaged.
- b) **If the battery is not used for a longer period of time, it must not remain on the charger or on the tool.** If a work break of more than 3 hours is expected, the battery must be removed from the tool. Otherwise, the battery may be permanently damaged.
- c) **The lithium-ion battery should not remain on the charger for longer than 36 hours for safety reasons.** Remove the battery from the charger immediately after the charging process is completed.
- d) **An empty battery should not be in contact with the tool or a charger that is disconnected from the mains for a longer period of time.** In both cases, currents can flow that deep discharge the battery and can permanently damage it.

- e) **Recharge the lithium-ion batteries immediately and never store them when empty.** If the battery is stored while disconnected from the tool and the charger, it will maintain a constant capacity over a long period of time. (Loss approx. 5 % per year)
- f) **Do not subject the lithium-ion battery to high temperatures (+ 50°C) or direct sunlight.** If the battery gets warmer than 50°C during operation (charging or discharging), it must be removed from the charger or tool immediately.
- g) **Keep the unused battery away from paper clips, coins, keys, nails, screws or other small metal objects which might bridge the contacts. Do not open the battery and do not short-circuit it.** A short-circuit between the battery contacts can lead to burns, fire or explosions.
- h) **Under extreme use or temperature conditions, batteries can leak.** Avoid contact with the skin or eyes if the battery leaks. The battery fluid is acidic and can cause chemical burns on tissue. If the fluid comes into contact with skin, immediately wash it with soap and water and then rinse it with lemon juice or vinegar. If the fluid gets into the eyes, flush with water for at least 10 minutes and immediately go to the doctor.
- i) **Make sure that the Li-Ion battery does not fall down or is subject to vibrations and impacts.**
- j) **Clean the contacts on the batteries and charging station regularly with a cloth soaked in high-percentage alcohol or alternatively with a cotton swab.**

#### NOTE



Lithium-ion batteries have nearly no self-discharge and do not have a memory effect. If properly used, they will reliably supply your tool with power for several years (approx. 800 - 1,200 charge cycles).

In general the following applies:

Avoid deep discharging or overcharging the lithium-ion battery under any circumstances. It will be permanently damaged from this.

## 2.9 Cleaning and disposal

Substances and materials used must be handled and disposed of properly, particularly when cleaning with solvents.



### Disposal

Power tools, batteries, accessories and packaging must be disposed of at an environmentally-compatible recycling facility. Power tools and batteries do not go into the household trash.



#### NOTE

Do not throw the used battery into the household waste, fire or water, instead have it professionally disposed of by a specialist or the manufacturer.

### Only for EU countries:

- Directive 2002/96/EG: Defective power tools must be collected separately and disposed of at an environmentally-compatible recycling facility.
- Directive 2006/66/EG: Defective or drained batteries must be collected separately and disposed of at an environmentally-compatible recycling facility. Drained batteries can be disposed of directly:

#### Germany:

Recyclingzentrum Elektrowerkzeuge  
Osteroder Landstraße 3  
37589 Kalefeld

## 2.10 Set-up

The charging station is only suitable for operation in a dry room. All ventilation slits must be unobstructed. If possible, set up the charging station up away from heaters and sun radiation as an ambient temperature of more than 35° C can result in significantly longer charging times.



### **WARNING**

The charging station must not be operated in closed cabinets.

## 2.11 Power supply

By plugging the power cable into the outlet and toggling the ON/OFF switch on the back, the charging station is ready to use.

## 2.12 Structure

1. Casing
2. Status LED charger compartment
3. Battery adapter
4. Wake-up button
5. LED signal description



### Versions



HST-MV3-04  
4-bay charger station  
row form



HST-MV3-02  
2-bay charger station



HST-MV3-04W  
4-bay charger station  
cube form

Battery charger station excl. battery adapters.

## 3 Start-up and use

---

### 3.1 Benefits

- Battery parameters are measured and processed
- Special HST frequency modulation impulse charging process® Anti-memory effect
- Automatic voltage detection
- IFCS - Intelligent Full Charge System for Li-Ion batteries
- Capacity-based charge maintenance mode only for Ni-Cd & NI-MH batteries
- Detection of defective cells
- Protection against reverse polarity
- Can also charge at temperatures > 40° C
- Adapter can be changed in 2 minutes
- Software update via USB
- Suitable for Ni-Cd, Ni-MH and Li-Ion batteries
- With PFC (Power Factor Control)

All common battery types from 3.6 - 43.2 V nominal voltage such as Atlas-Copco, Bosch, Fein, Makita, Panasonic, Desoutter, HS-Technik etc. can be quickly and reliably charged with the HST-MV3 charging station.



#### **WARNING**

The matching battery adapter and the correct software and firmware must be mounted/installed to charge the batteries.

### 3.2 Additional information

If the operation voltage is connected and the charging station is switched on, a self test will automatically start.

After switching on the charger, all of the LEDs will light up and then a signal will sound. When all of the LEDs go off, the charging station is ready to use. Now batteries can be inserted for charging.



#### **NOTE**

HS-Technik offers updates for the charging station for download in the course of further development. The operator is obligated to keep the charging station firmware up-to-date. HS-Technik does not assume any liability for defective batteries if the charging station is not operated with up-to-date firmware.





## **WARNING**

Make sure the polarity +/- is correct.

When replacing batteries, make sure the new battery is not inserted until the LEDs have gone out (red or green).

If a battery is replaced very quickly, the electronics may retain the status of the previous battery pack.

### **3.2.1 Charging process**

Via an initialization routine, the voltage, temperature, short circuits and reverse polarity of the inserted battery are checked.

Prior to starting the charging process, the temperature contacts (NTC contact, etc.) are checked. If the temperature contacts are OK, the battery will be charged.

If the battery is too hot, it can stay in the charging station, and when it has cooled down, it will automatically start the charging again.




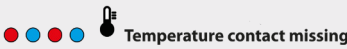


If the red LED lights up, the charging process will start using the special HST frequency modulation impulse process® and charge the battery based on how depleted the battery is.

During the charging process, the voltage and temperature of the cells and the remaining charging time are continuously monitored.

Taking all of the parameters into account, the charging current and remaining charging time varies on a case-by-case basis. The installed fans switch on automatically, as needed during each charging process.

Every charging process can be recorded on an optional memory chip for subsequent evaluation.

### 3.2.2 Explanation of the LED signals / functions

LED signals	Function
	<p>When the charging station is not in use, it switches to sleep mode. In order to be able to charge a battery, the station must be activated by pressing the "wake up" button. This is located on the lower left of the front side. If the button is lit green, the charging station is switched on and batteries can be charged.</p>
	<p><b>Continuously lit red:</b> Battery is charging <b>Continuously lit green:</b> Battery is fully charged</p>
	<p><b>Blinking blue:</b> Temperature is too high or too low to charge. If the temperature of the battery is below 10° C, the LED will blink blue and the charging station will only charge the battery with a low current up to a temperature of 10° C has been reached. From then on, the station will charge the battery normally. The same applies when the temperature of the battery exceeds 55° C; the battery will also be charged with a low current until the temperature of the battery drops below 55° C.</p>
	<p><b>Blinking red/blue:</b> The charging station cannot find a temperature contact. In most cases, the battery contact is defective or damaged.</p>
	<p><b>Blinking red:</b> The battery is defective. The charging station cannot find a measurable voltage.</p>
	<p><b>Blinking yellow:</b> The battery voltage is too high or too low for the battery type. This battery cannot be charged.</p>

### 3.2.3 Sleep function

The sleep function defines the time after which the charging station or the boards switches to sleep mode when it is not charging batteries. The time can be set freely up to 18:12:15 hours via the software. The charging station can be woken up from sleep mode by pressing the wake-up button on the front or by putting on a battery.

Each board goes into sleep mode separately after the set time if it is not in use. If the last board goes in sleep mode the power supply will shut off.



#### NOTE

Prior to use, always check that the mounted battery adapter is compatible with the battery you wish to charge.

### 3.3 Safety functions and special features

The battery is charged using the HST frequency modulation impulse charging process® until a charging parameter is reached, then the charger switches to charge retention mode.

A microprocessor monitors and controls every charging box and only supplies the battery with as much energy as it can effectively absorb (dialog between the battery and charging station).

This results in low heat development and faster and better storage of the capacity. This special charging technology ensures the charging process is always extremely gentle on the battery and guarantees a very long service life of the battery. Furthermore, this dynamic charging technology automatically regenerates older batteries (that were charged with other chargers) with reduced capacity, so these batteries can continue to be used.

No "memory effect" for Ni-Cd and Ni-MH batteries, due to the special charging technology, the residual energy in the cells is shifted which prevents accumulation or crystallization of the electrolytes. Every time the battery is charged, the cells are reformatted and the electromechanical balance is rearranged. Thus, the voltage curve when discharging is significantly higher than with other comparable charging processes. (More energy in the form of joules can be discharged).

Higher capacity at lower currents.

The charging boxes are completely short-circuit-proof and protected against reverse polarity so the batteries will not be destroyed. If the polarity is reversed or there is a short-circuit, the charging box is disconnected from the power supply and a signal will sound, accompanied by a red blinking LED.

(The highest level of safety is thus ensured.)

The fans are controlled based on need and cool the batteries quickly, even under extreme stress.

Absolute protection against overloading via voltage monitoring and voltage gradient evaluation as well as Delta U, charging time limitation and dynamic temperature evaluation.

Automatic dynamic evaluation of the temperature contacts depending on the adapter type.



#### **NOTE**

Only for Ni-Cd and Ni-MH batteries.

### **3.4 Software**

- Special HST frequency modulation impulse charging process® (absolutely no memory effect due to variable frequency-modulated impulse charging current with a high amplitude)
- Self diagnostic (test of the internal power circuit)
- Polarity reversal protection (power is disconnected from the charging box, accompanied by a signal and a red blinking LED, disconnect charging box - battery)
- Special charge mode for Ni-Cd batteries (for deep discharging or dormant batteries)
- No voltage change required (battery voltage is detected automatically)
- Charging at battery temperatures exceeding 40° C (by generating gradients using dynamic temperature evaluation)
- Automatic evaluation of the temperature contacts (with NTC contact, a dynamic temperature evaluation is performed, this depends on the battery adapter.)

- Defective cell detection (red blinking LED = battery is defective or battery no longer has full capacity)
- Status indication via LED (red = charging / green = full)
- Charging effectiveness higher than 95 %
- Fan control
- New, capacity-related charge retention mode for Ni-Cd and Ni-MH (prevents the charging capacities in the battery pack from drifting apart)
- Suitable for Li-Ion batteries (3.6 - 43.2 V nominal voltage)

### **3.5 Shut-off criteria**

- Dynamic temperature evaluation (temperature gradient evaluation)
- Capacity-related full detection
- $\Delta U$  detection and voltage gradient evaluation (automatic parameter definition based on the charge status of the battery pack)
- Battery analysis and characteristic diagram control prior to and during the charging process (charging parameters are automatically determined and defined based on the battery pack)
- Plausibility test (check whether the battery parameters are logical with regard to each other)

## 4 Technical data

Model	HST-MV3-02 / HST-MV3-04 / HST-MV3-04W	
Input	100 - 240 VAC, 50 - 60 Hz max. 624 VA (HST-MV3-02: 336VA)	
Output	max. 56 VDC	
Level of efficiency	> 89 %	
Power supply ventilator	$\leq 45^{\circ}\text{C} / 113^{\circ}\text{F}$ (OFF) $\geq 50^{\circ}\text{C} / 122^{\circ}\text{F}$ (ON)	
Weight	HST-MV3-02	approx. 4,9 kg (without battery)
	HST-MV3-02	approx. 5,7 kg (with battery)
	HST-MV3-04 row form	approx. 8,2 kg (without battery)
	HST-MV3-04 row form	approx. 8,8 kg (with battery)
	HST-MV3-04W cube form	approx. 8,5 kg (without battery)
	HST-MV3-04W cube form	approx. 9,5 kg (with battery)
Dimensions (W × H × D) without battery adapter	HST-MV3-02	289 × 182 × 260 mm (incl. feet)
	HST-MV3-04 (row form)	539 × 182 × 260 mm (incl. feet)
	HST-MV3-04W (cube form)	289 × 330 × 260 mm (incl. feet)
Compliance	CE, FCC	

## 5 Battery adapter

Order no.	For battery types	
<b>M-MV3-PR</b>	HS-Technik HST-PR	14.4 & 18 V Li-Ion
<b>M-MV3-BH</b>	Makita Makstar (BL)	14.4 & 18 V Li-Ion
	Makita Makstar (BH)	9.6 - 24 V Ni-MH
	HST-BL	14.4 & 18 V Li-Ion
	HST-BH	9.6 - 24 V Ni-MH
<b>M-MV3-BO-LI</b>	Bosch	14.4 & 18 V Li-Ion
<b>M-MV3-BO-10</b>	Bosch	10.8 V Li-Ion
<b>M-MV3-BO-NI</b>	Bosch	7.2 - 18 V Ni-Cd & Ni-MH
<b>M-MV3-FEIN</b>	Fein ASM / ASW	10.8 / 14.4 / 18 V Li-Ion
<b>M-MV3-CPN</b>	Atlas Copco	18 & 36 V Li-Ion (before 2021 3-pole batteries)
	Desoutter	18 & 36 V Li-Ion (before 2021 3-pole batteries)
<b>M-MV3-Cleco</b>	Apex Cleco Power Tools	26 & 44 V Li-Ion
<b>M-MV3-AC30</b>	Atlas Copco	18 & 30 V Li-Ion
<b>M-MV3-UNI</b>	Makita	7.2 - 24 V Ni-Cd & Ni-MH
	Bosch	7.2 - 18 V Ni-Cd & Ni-MH
	Gesipa	12 V Ni-Cd & Ni-MH
	Gesipa	14.4 V Li-Ion
<b>M-MV3-GE</b>	Gesipa	18 V Li-Ion
<b>M-MV3-PA-36</b>	Panasonic	3.6 V Li-Ion
<b>M-MV3-PA-LI</b>	Panasonic	10.8 / 14.4 / 18 V Li-Ion
<b>M-MV3-PA-72</b>	Panasonic	7.2 V Li-Ion
<b>M-MV3-IR</b>	Ingersoll Rand	20 & 40 V Li-Ion
<b>M-MV3-SCS</b>	SCS	3.6 V
<b>M-MV3-DES</b>	Desoutter	18 & 36 V Li-Ion (since 2021 with electronic)

A battery adapter alone cannot charge batteries; it can only be used in combination with a 2 or 4 bay charging station. Different battery adapters can be mounted on one charging station on multi-bay charging stations. If you require battery adapters for older charging stations, please contact us.

Example pictures:



M-MV3-PR



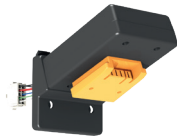
M-MV3-BH



M-MV3-BO-LI



M-MV3-BO-10



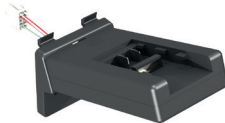
M-MV3-FEIN



M-MV3-CPN



M-MV3-UNI



M-MV3-PA-LI



M-MV3-PA-36

Additional battery adapters upon request.



## 5.1 Changing the battery adapter

In order to mount another battery adapter, proceed as follows:

The charging station must be switched off and the power supply must be disconnected prior to changing the adapter. Then, the adapter which needs to be changed must be loosened, so that the circuit board of the charger is accessible.

There are 4 different designs / basic forms of battery adapters. After loosening the mountings, all 4 designs are removed in the same manner. To do this, lift the adapter up slightly and pull it out to the top.



### WARNING

Only authorized specialists are permitted to change the battery adapter. For the exchange is no electrical qualified personnel required.

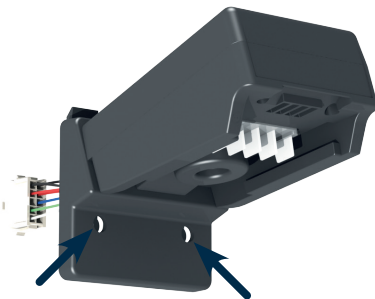


### DANGER

#### Risk of injury from sharp edges

Sharp edges on the cutouts of the battery adapter can cause injuries.

- Watch out for sharp edges.
- If necessary, wear gloves to avoid cuts.

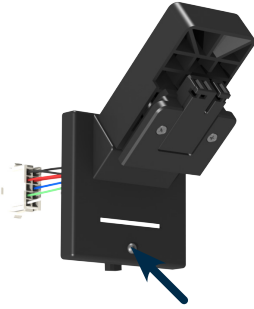


#### Design 1

Rotate the two flathead screws approx. half a turn.

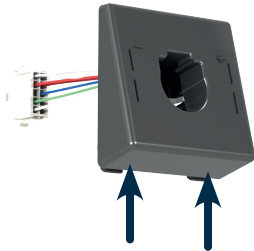
 loosen (CCW)

 mount (CW)



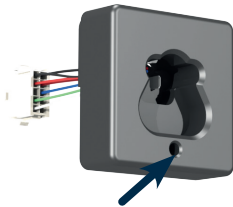
### Design 2

Loosen the torx screw in the middle by approx. a quarter of a turn to the left.



### Design 3

Loosen the two torx screws on the bottom of the adapter by approx. 8 - 10 turns to the left. Do not loosen the screws to far, because the nut can be loosen then too.



### Design 4

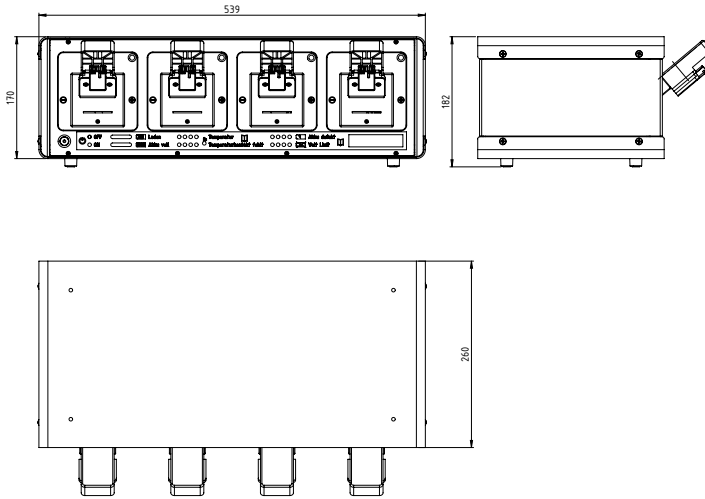
Loosen the flathead screw in the middle of the bottom of the battery adapter.

After loosening the battery adapter the connection plug must be removed from the board. Therefore the small locking mechanism needs to be pushed to open it. Then the plug can be removed. In order to connect a new battery adapter the locking mechanism must be locked again.

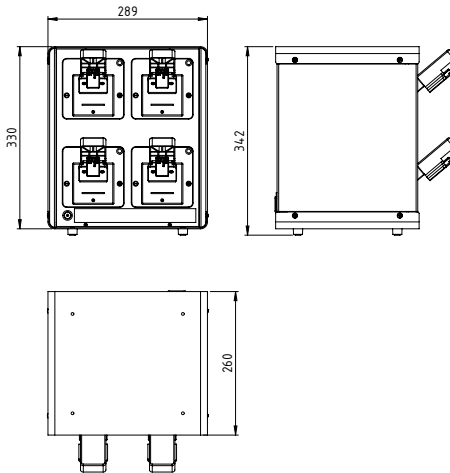
Install adapters by following these steps:  
Place/plug in the connection plug onto the circuit board  
Insert and screw down the battery adapter

## 6 Drawings

### 6.1 4-bay charger station row form (HST-MV3-04)

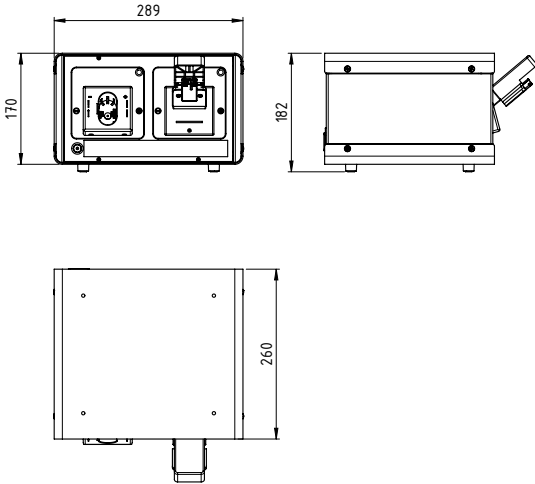


### 6.2 4-bay charger station cube form (HST-MV3-04W)



Dimensions in mm (without battery adapter)  
Not shown to scale

### 6.3 2-bay charger station (HST-MV3-02)



Dimensions in mm (without battery adapter)  
Not shown to scale

## 7 Spare parts list

---

You can request a replacement parts list from [info@hs-technik.com](mailto:info@hs-technik.com) or via telephone +49 (0)7628 / 91 11 0.

# CE Declaration of conformity

---

We, the manufacturer, hereby declare that the named device complies with the essential protection requirements of the listed EU directives regarding design and construction type.

The prerequisite for this is the intended use of the device as well as compliance with the installation and commissioning instructions.

If the product or its accessories are modified without our consent, this declaration becomes invalid.

**Device description:** Charging station for charging Ni-Cd-, Ni-MH- und Li-Ion batteries from different manufacturers with 3.6 - 43.2 V and NTC temperature monitoring

**Type designation:** HST-MV3-xx

**Manufacturer:** HS-Technik GmbH  
Im Martelacker 12  
D-79588 Efringen-Kirchen

**Directives:** 2014/35/EU  
2014/30/EU

**Applied standards:** EN 60335-1:2012  
EN 60335-2-29:2004+A2:2010  
EN 55011:2016  
EN 61000-6-2:2005  
EN 61000-3-2:2014  
EN 61000-3-3:2013

HS-Technik GmbH  
Im Martelacker 12, D-79588 Efringen-Kirchen

August 2018



H.-Martin Hanke  
Manager



**HS-Technik GmbH**  
High - System - Technik

HS-Technik GmbH  
Im Martelacker 12  
D-79588 Efringen-Kirchen

Telefon: +49 (0)7628 - 91 11-0  
Telefax: +49 (0)7628 - 91 11-90  
E-Mail: [info@hs-technik.com](mailto:info@hs-technik.com)  
Internet: [www.hs-technik.com](http://www.hs-technik.com)