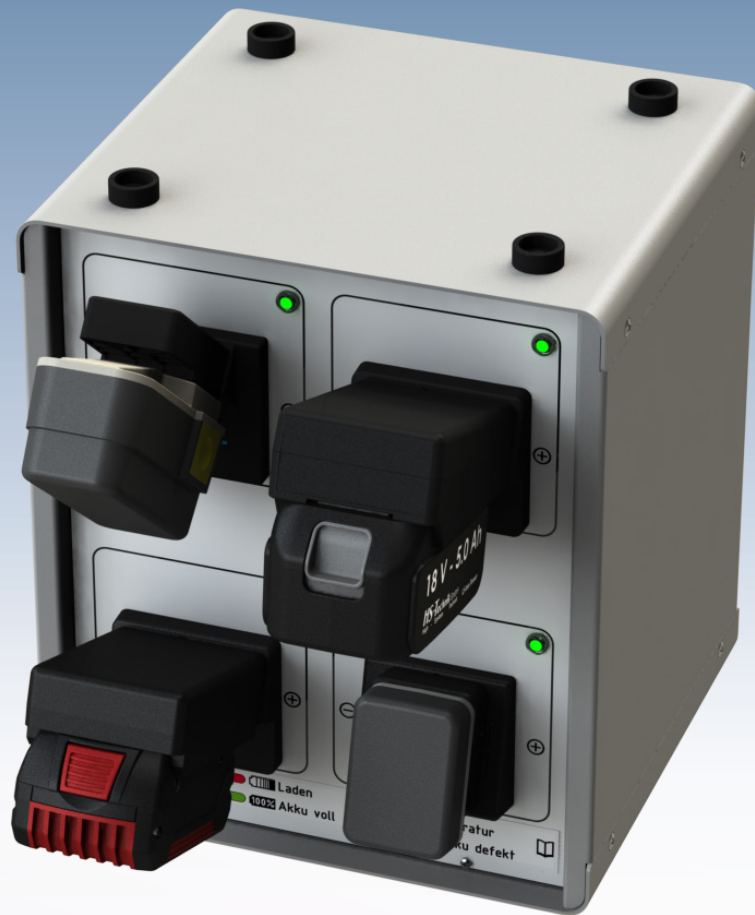


# Battery charging technology

Single and multi-bay chargers



Your distributor

*Premium Power Tools*

MADE IN GERMANY



**HS-Technik** GmbH  
High - System - Technik

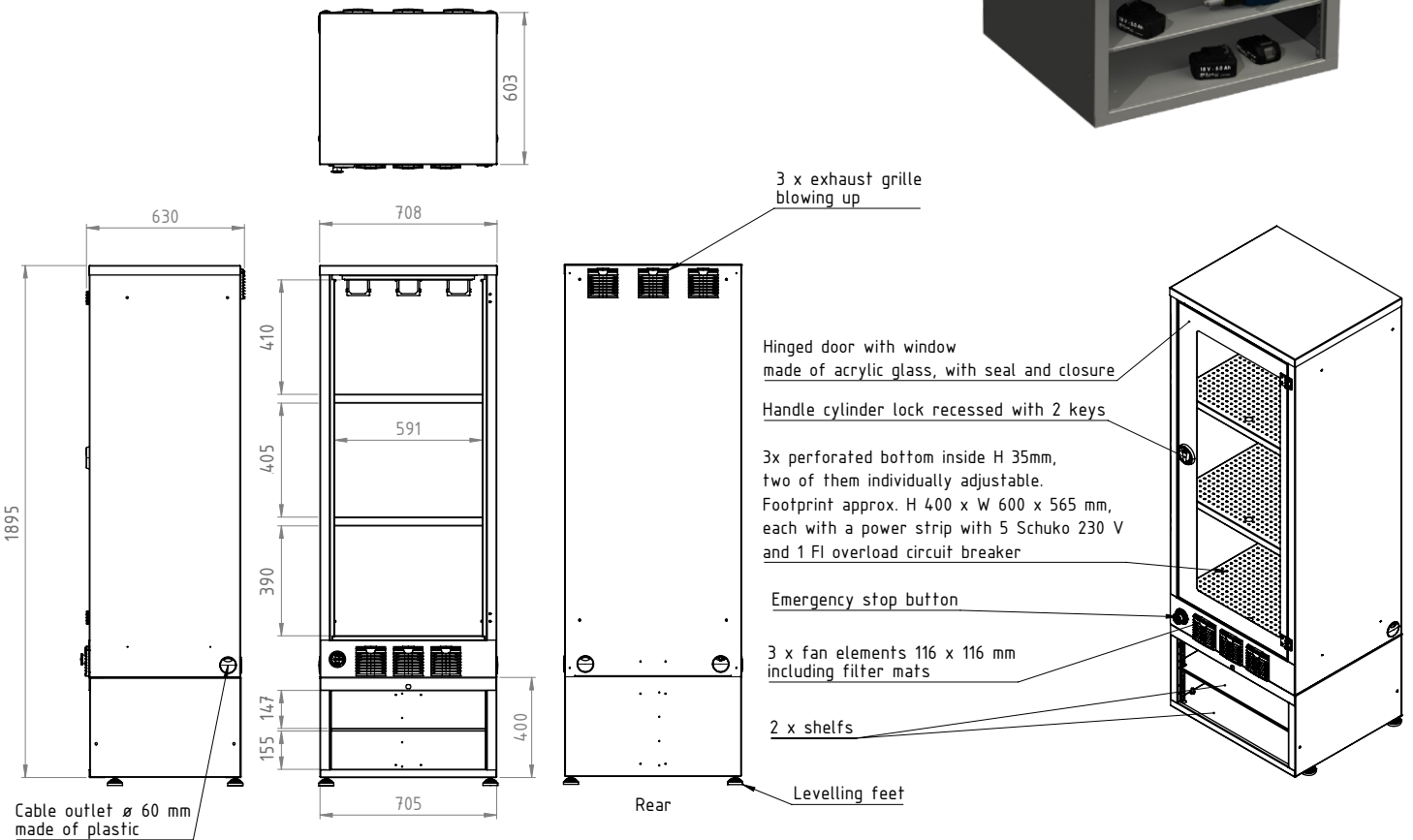
# HST-MCC

## Charging cabinet for MV3 multi bay charging stations

- **HS-Technik charging cabinet for up to 24 charging bays**
- **Fans to cool the system**  
Fans are thermostat-controlled, sufficient ventilation ensured even when the door is closed.
- **Door with window made of acrylic glass**
- **Anti-theft device**  
Door can be locked
- **Emergency stop**
- **Two adjustable shelves**



Order no.	Description
HST-MCC	Entire charging cabinet
Dimensions W x H x D	708 x 2.043 x 630 mm

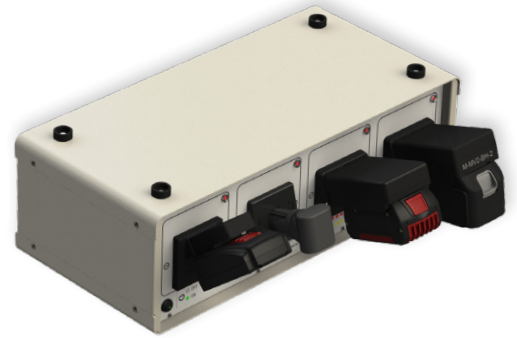
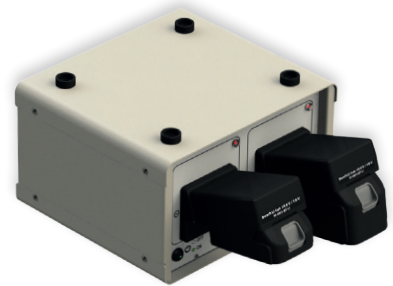


Not shown to scale

# HST-MV3

## Multi-bay charger station for Li-Ion, Ni-MH and Ni-Cd power tool batteries

- **2-bay and 4-bay charging station**
- **IFCS - Intelligent full charge system for Li-Ion batteries**  
Charges Li-Ion batteries up to 98 %
- **Special HST-Frequency-Modulation-Impulse-Charging-Process®**  
for Ni-Cd, Ni-MH and Li-Ion batteries  
Absolutely no memory effect due to variable frequency-modulated impulse charging current
- **Special pre-charging mode**  
For deep discharged or dormant Ni-Cd, Ni-MH and Li-Ion batteries
- **No voltage adjustment required**  
Battery voltage is detected automatically
- **Capacity-based trickle charge mode for Ni-Cd and Ni-MH batteries**
- **Wide voltage range**  
from 3.6 V to 50.4 V (43.2 V nominal voltage)
- **Charging current max. 4 A**
- **Automatic battery adapter detection**  
Battery adapter can be replaced without updating the software
- **Internal diagnosis**  
Testing the supply voltages
- **Cooling fan**  
Requirement-based control, the fan runs whenever the temperature conditions require. Charging possible even at ambient temperatures from more than 40° C.
- **Reverse polarity protection**  
Power-free shut-down on the charger box, disconnecting the charger box battery
- **Multi-color LED status indicator**  
green= battery full  
red = battery charging  
flashing red = battery defective  
flashing blue= temperature too high / low or battery very deeply discharged
- **Separate power electronics for each charging bay**
- **Programming and software updates with HST-Tool-Manager**
- **Global use**  
Due to universal power supply unit 100 - 240 V AC, 50 - 60 Hz  
Typical cold device plugs
- **Robust and maintenance-friendly housing**
- **Batteries from the following manufacturers can be charged\***  
HS-Technik, Makita, Bosch, Fein, Gesipa, AtlasCopco, Cooper Power Tools, Panasonic, Desoutter, Apex, Cleco, etc.



\* Not all batteries from the manufacturer can be charged.

# HST-MV3

Multi-bay charger station for Li-Ion, Ni-MH and Ni-Cd power tool batteries

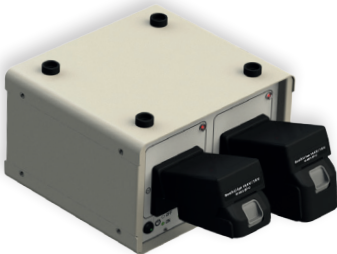
## Standby - Energy-saving function

As soon as all the batteries have been charged or the station is not in use, it will automatically switch to energy-saving mode. Power consumption in standby mode < 0.75 watts.

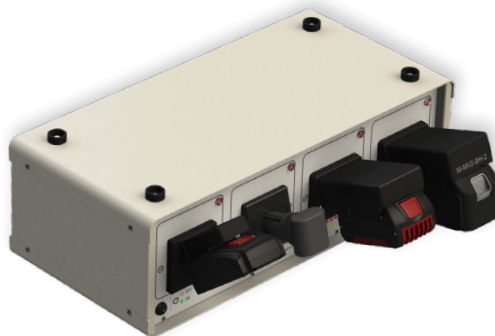
<b>Order no.</b>	<b>HST-MV3-02 / HST-MV3-04 / HST-MV3-04W</b>	
<b>Input</b>	100 - 240 V AC, 50 - 60 Hz	
<b>Power consumption</b>	max. 336 W / 624 W	
<b>Efficiency</b>	> 89 %	
<b>Output</b>	max. 56 V	
<b>Weight</b>	HST-MV3-02	approx. 4.9 kg
	HST-MV3-04	approx. 8.3 kg (row)
	HST-MV3-04W	approx. 8.0 kg (cube)
<b>Dimensions W × H × D without battery adapter</b>	HST-MV3-02	approx. 290 × 180 × 260 mm (incl. stand)
	HST-MV3-04 (row)	approx. 540 × 180 × 260 mm (incl. stand)
	HST-MV3-04W (cube)	approx. 290 × 340 × 260 mm (incl. stand)

\* Please order the stands separately.

## Variants



Order no.: HST-MV3-02  
2-bay charging station



Order no.: HST-MV3-04  
4-bay charging station  
Row



Order no.: HST-MV3-04W  
4-bay charging station  
Cube

Charging stations are delivered without battery adapter.

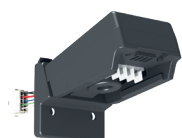
# Battery adapter

Battery adapter - all variants can be combined in any combination

The specifications of the battery cell manufacturers and the specifications of the battery pack from each manufacturer are taken into account in the charging process.

Order no.	For battery types	
M-MV3-PR	HS-Technik HST-PR	14.4 & 18 V Li-Ion
M-MV3-BH	Makita Makstar (BL) Makita Makstar (BH) HST-BL HST-BH	14.4 & 18 V Li-Ion 9.6 - 24 V Ni-MH 14.4 & 18 V Li-Ion 9.6 - 24 V Ni-MH
M-MV3-BO-LI	Bosch	14.4 & 18 V Li-Ion
M-MV3-BO-10	Bosch	10.8 V Li-Ion
M-MV3-BO-NI	Bosch	7.2 - 18 V Ni-Cd & Ni-MH
M-MV3-FEIN	Fein ASM / ASW	10.8 / 14.4 / 18 V Li-Ion
M-MV3-CPN	Atlas Copco Desoutter	18 & 36 V Li-Ion (before 2021 3-pole batteries) 18 & 36 V Li-Ion (before 2021 3-pole batteries)
M-MV3-Cleco	Apex Cleco Power Tools	26 & 44 V Li-Ion
M-MV3-AC30	Atlas Copco	18 & 30 V Li-Ion
M-MV3-UNI	Makita Bosch Gesipa Gesipa	7.2 - 24 V Ni-Cd & Ni-MH 7.2 - 18 V Ni-Cd & Ni-MH 12 V Ni-Cd & Ni-MH 14.4 V Li-Ion
M-MV3-GE	Gesipa	18 V Li-Ion
M-MV3-PA-36	Panasonic	3.6 V Li-Ion
M-MV3-PA-LI	Panasonic	10.8 / 14.4 / 18 V Li-Ion
M-MV3-PA-72	Panasonic	7.2 V Li-Ion
M-MV3-IR	Ingersoll Rand	20 & 40 V Li-Ion
M-MV3-SCS	SCS	3.6 V
M-MV3-DES	Desoutter	18 & 36 V Li-Ion (since 2021 with electronic)

Example pictures:



M-MV3-PR



M-MV3-BH



M-MV3-BO-LI



M-MV3-BO-10



M-MV3-FEIN



M-MV3-CPN



M-MV3-UNI



M-MV3-PA-LI



M-MV3-PA-36

If you require battery adapters for older charging stations, please contact us.  
Additional battery adapters upon request.

# HST-PR-2830

## Single charger for HST-PR-Series batteries

- **Optimized for HST-PR series 14,4 V and 18 V batteries**
- **Defective battery detection**
- **Microprocessor-controlled charging**  
Charging time depends on the battery capacity
- **No voltage change required**  
Battery voltage is detected automatically
- **Polarity reversal protection**
- **Chargeable battery types**  
HST-PR-1425 / -1450 / -1475 and HST-PR-1825 / -1850 / -1875



Order no.	Description
HST-PR-2830	Quick charger
HST-PR-2830-USA	Quick charger for 110 V

## Technical data

Order no.	HST-PR-2830	HST-PR-2830-USA
Input	220 - 240 V AC, 50 - 60 Hz	110 V AC, 50 - 60 Hz
Charging current	3 A	3 A
Output	max. 21 V	max. 21 V
Charging time	max. 55 min with 2.5 Ah battery	max. 55 min with 2.5 Ah battery
Shut-off criteria	$\Delta U$ , temperature shut-off	$\Delta U$ , temperature shut-off
Weight	approx. 550 g	approx. 550 g
Dimensions W × H × D	approx. 85 × 110 × 155 mm	approx. 85 × 110 × 155 mm

# HST-BL-2830MS

Quick charger for Ni-MH and Li-Ion batteries

- **Universal quick charger for 14.4 V - 18 V Li-Ion and 9.6 V - 24 V Ni-MH battery packs**
- **Defective battery detection**
- **Microprocessor-controlled charging**  
Charging time depends on the battery capacity
- **No voltage change required**  
Battery voltage is detected automatically
- **For Ni-MH / Li-Ion battery packs**
- **Chargeable battery types**  
HST-BL-1425, HST-BL-1450, HST-BL-1475,  
HST-BL-1825, HST-BL-1850, HST-BL-1875  
Makita Makstar 14.4 V and 18 V



Order no.	Description
HST-BL-2830MS	Quick charger
HST-BL-2830MS-USA	Quick charger for 110 V

## Technical data

Order no.	HST-BL-2830MS	HST-BL-2830MS-USA
Input	220 - 240 V AC, 50 – 60 Hz	110 V AC, 50 – 60 Hz
Charging current	3 A	3 A
Output	max. 21 V	max. 21 V
Charging time	max. 55 min with 2.5 Ah battery	max. 55 min with 2.5 Ah battery
Shut-off criteria	$\Delta U$ , temperature shut-off	$\Delta U$ , temperature shut-off
Weight	approx. 550 g	approx. 550 g
Dimensions W × H × D	approx. 85 × 110 × 155 mm	approx. 85 × 110 × 155 mm

**Makita**<sup>®</sup>  
**Panasonic**  
ideas for life

Our range of  
products also  
includes chargers  
from Makita and  
Panasonic.



**HS-Technik GmbH**  
High - System - Technik

Im Martelacker 12  
D-79588 Efringen-Kirchen  
Phone: +49 (0) 76 28 - 91 11-0  
Fax: +49 (0) 76 28 - 91 11-90  
E-mail: [info@hs-technik.com](mailto:info@hs-technik.com)  
Internet: [www.hs-technik.com](http://www.hs-technik.com)

© Copyright June 2021

Subject to modifications and errors. All figures are non-binding.

We reserve the right to make technical changes to our products and the range of products as a result of further development.

Reproduction and the use of texts, even excerpts of our brochures is prohibited and will be prosecuted.