

# TBe-Series

Electric EC screwdriver  
with torque transducer & angle encoder



*Premium Power Tools*



MADE IN GERMANY



**HS-Technik** GmbH  
High - System - Technik

# TBe-Series

## Overview

- EC screwdriver with torque transducer and angle encoder
- Torque ranges from 0.1 - 10 Nm
- 4 programs, in C-version 32 programs
- Ergonomically shaped aluminium housing, ESD-compatible
- Push and lever start
- Brushless motor technology
- Modular system, can be expanded at any time
- Industry 4.0 capable



1/4" Hexagon Drive  
Insertion Depth 16mm



# TBe-Series

## Model selection

### TBe-x - Series

- Electric EC screwdriver with 4 programmes
- No controller necessary
- Screwdriver cable 3 metres

- USB interface for programming and parametrization
- TBe-Manager included in the scope of delivery

Order no.	Torque range	Speed	Drive	Length	Diameter	Clamping-diameter	Weight
TBe-1	0,1 - 1,0 Nm	50 - 1.300 U/min	1/4" hex	279 mm	42 mm	36 mm	0,88 kg
TBe-5	0,5 - 5,0 Nm	50 - 600 U/min	1/4" hex	279 mm	42 mm	36 mm	0,88 kg
TBe-10	1,0 - 10,0 Nm	20 - 400 U/min	1/4" hex	335 mm	48 mm	40 mm	1,20 kg



Scope of delivery TBe-x-Series

### TBe-xC - Series

- Electric EC screwdriver with controller and 32 programs
- The Driver Cable 3 metres
- The Driver Cable 2 metres
- USB interface for programming and parametrization

- TBe-Manager included in scope of delivery
- Extended interfaces
- Optional hardware available (bit selector, Linear arm, scanner, ...)
- Optional worker guidance

Order no.	Torque range	Speed	Drive	Length	Diameter	Clamping-diameter	Weight
TBe-1C	0,1 - 1,0 Nm	50 - 1.300 U/min	1/4" hex	279 mm	42 mm	36 mm	0,88 kg
TBe-5C	0,5 - 5,0 Nm	50 - 600 U/min	1/4" hex	279 mm	42 mm	36 mm	0,88 kg
TBe-10C	1,0 - 10,0 Nm	20 - 400 U/min	1/4" hex	335 mm	48 mm	40 mm	1,20 kg

2 x (2 m, 3m)



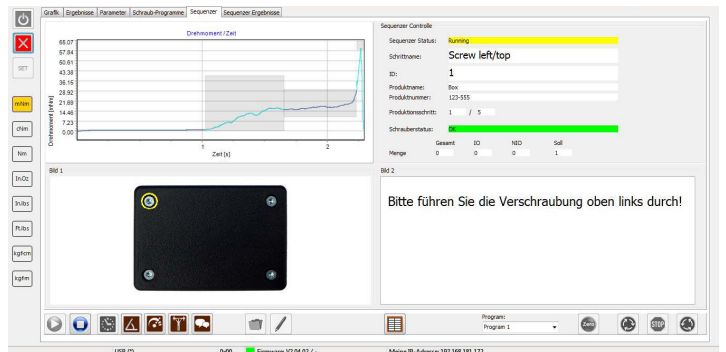
Scope of delivery TBe-xC-Series

# TBe-Series

## Optional hardware

### TBe-Manager Pro

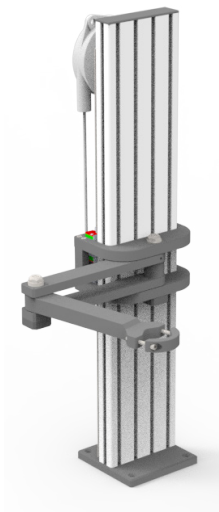
- Visualisation of the assembly process with up to 200 work steps
- Selection of tightening & other assembly operations
- Documentation of each step



Example instructions to the operator during a bolting step

Article number	Description
----------------	-------------

TBe-Manager-Pro	Screwdriving system software with Operator guidance
-----------------	---



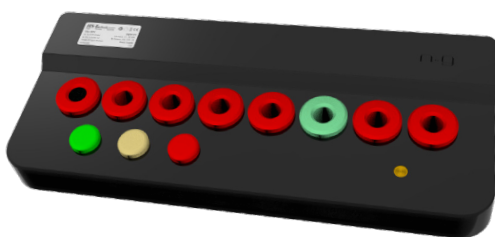
Linear arm with position monitoring

### Linear arm with position monitoring

- Release of the screwdriving system at defined coordinates
- Teaching of the arm in worker guidance mode
- Absorption of the reaction torque for improved ergonomics
- Can only be used in combination with TBe-BPC and TBe-Manager-Pro

Article number	Description
----------------	-------------

Posi-fix-400	Linear arm with position monitoring
--------------	-------------------------------------



Article number	Description
----------------	-------------

TBe-BPC	8-bay Bit selector for TBe-series
---------	-----------------------------------

### Bit selector

- Pick by Light
- Up to 8 different screw bits
- Can only be used in combination with the TBe-Manager-Pro

# TBe-Series

## Accessories- easy-linearfix / easy-linearfix-BIG

### easy-linearfix / easy-linearfix-BIG

- Suitable for screwing, drilling, thread cutting
- Quick and safe positioning
- Quick tool change
- Flexible
- Order and safety in the workplace
- Easy running thanks to recirculating ball bearings
- Can be turned by 360°
- Absorbtion of the screwdriver weight
- Easy handling
- No backing forces
- Exhaustion-free work



easy-linearfix-B with stops

## Technical Data

Order no.	Working radius (pull-out length)	Screwdriver weight	Working height	Torque absorbtion	Inclusive tool holder
EASY-LINEARFIX	130 - 460 mm	0,5 - 2,5 kg	60 - 430 mm	max. 15 Nm	HST-EPF-H45
EASY-LINEARFIX-600	130 - 600 mm	0,5 - 2,5 kg	60 - 430 mm	max. 15 Nm	HST-EPF-H45
EASY-LINEARFIX-700	130 - 700 mm	0,5 - 2,5 kg	60 - 430 mm	max. 15 Nm	HST-EPF-H45
EASY-LINEARFIX-750	130 - 750 mm	0,5 - 2,5 kg	60 - 430 mm	max. 15 Nm	HST-EPF-H45
EASY-LINEARFIX-B	160 - 500 mm	0,5 - 2,5 kg	60 - 430 mm	max. 25 Nm	HST-EPF-H45
EASY-LINEARFIX-B-800	160 - 800 mm	0,5 - 2,5 kg	60 - 430 mm	max. 25 Nm	HST-EPF-H45
EASY-LINEARFIX-B-900	160 - 900 mm	0,5 - 2,5 kg	60 - 430 mm	max. 25 Nm	HST-EPF-H45
EASY-LINEARFIX-B-1000	160 - 1.000 mm	0,5 - 2,5 kg	60 - 430 mm	max. 25 Nm	HST-EPF-H45

# TBe-Series

## Accessories - Carbon torque arms

### Carbon torque arms

- optimized for industrial applications

- Torque relieving up to 15 Nm
- 2 axis precise positioning of the screw
- Improved ergonomics, results in less exhaustion of the operator
- Smooth-running through high quality components
- Minimal weight
- Maintenance-free
- Very robust, thanks to the best quality of carbon fibre
- Absorption of weight and reaction force
- Suitable for different tools



## Carbon torque arms - TAC Series

### Horizontal application

Order no.	Length min.	Length max.	Torque max.	Incl. tool holder
TAC-10-1000	495 mm	1.105 mm	10 Nm	TAC-15-BTH
TAC-10-1500	665 mm	1.605 mm	10 Nm	TAC-15-BTH
TAC-15-1000	486 mm	1.066 mm	15 Nm	-
TAC-15-1500	646 mm	1.556 mm	15 Nm	-
TAC-15-2000	806 mm	2.046 mm	15 Nm	-

# TBe-Series

## Accessories - Carbon torque arms

### Basic Tool Holder

Order no.	no.	Tool grip		Description	Compatible with
		ø min	ø max		
-	1	26,5 mm	44 mm	Basic Tool Holder	TAC-10 (*)
TAC-15-BTH	2	27 mm	45 mm	Basic Tool Holder with 2 screws	TAC-15



### Multi-position tool holder

Order no.	no.	Tool grip		Description	Compatible with
		ø min	ø max		
TAC-15-MTH-INT	1	n/a	n/a	Multi-position tool holder interface	TAC-15
TAC-15-MTH	2	27 mm	45 mm	Multi-position tool holder	TAC-15
MTH-EXT-90	3	n/a	n/a	Extension 90 mm for Multi-position tool holder	TAC-15



# TBe-Series

## Accessories - Carbon torque arms

### Floating balancer TSB

- Tools can be hung up weightlessly (floating)
- Allows precise work
- Protects tools against damage and soiling
- Allows rational work
- Carrying capacity of 0,5 - 3 kg



## Technical data

Order no.	Carrying capacity	Weight	Diameter / height	Cable pull-out
TSB-0	0,5 - 1,5 kg	0,5 kg	128 / 237 mm	1.000 mm
TSB-00	0,5 - 1,5 kg	0,2 kg	128 / 237 mm	500 mm
TSB-03	1,0 - 3,0 kg	1,4 kg	148 / 290 mm	1.300 mm



# TBe-Series

## Accessories - Automatic screw feeders

### FK Series

For small screws in the production environment

- For nine different screw diameters
- Various screw head shapes can be used
- Screw length max. 18 mm
  - FK-xxx  
for standard screws



## Technical Data

Order no.	FK-505 Series
Input	100 - 240 V, 50/60Hz, 15 VA
Output	DC 12 V, 200 mA
DC plug	EIAJ Type
Dimensions (L x W x H)	120 x 155 x 138 mm
Weight (basic unit)	FK-505: 1,1 kg
Screw capacity	ca. 1,5 Sek. for a screw
Screw length max.	18 mm
Screw conveyance	Inclined plane (fixed rail width)
Work environment	+10 ~ +30°C (no condensation)
Storage temperature	-10 ~ +50°C (no condensation)
Noise level	66 dB
Environmental load	Level 2
Operating environment	Use exclusively in dry rooms

# TBe-Series

## Accessories - Automatic screw feeders

### FK Series

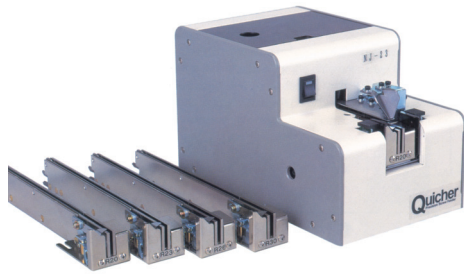
#### Technical Data

Order no.	Ø Screw diameter	Screw length (min.)	Screw length with spring disk (min.)	Screw length with spring disk and washer (min.)
FK 514	M1.4	1,4 mm	-	-
FK 517	M1.7	1,6 mm	-	-
FK 520	M2.0	1,8 mm	3,0 mm	5,0 mm
FK 523	M2.3	2,5 mm	4,0 mm	5,0 mm
FK 526	M2.6	2,8 mm	4,0 mm	6,0 mm
FK 530	M3.0	3,0 mm	4,0 mm	6,0 mm
FK 535	M3.5	3,5 mm	6,8 mm	8,0 mm
FK 540	M4.0	4,0 mm	6,8 mm	8,0 mm
FK 550	M5.0	5,0 mm	8,0 mm	10,0 mm

<b>Appropriate screws</b>	<b>9 different screw diameters</b>
<b>Screw type, material</b>	Metric screws plate and plastic, iron or magnetic material
<b>Shape of the screws</b>	Flat head, button-head, mushroom head bolt, round and flat-head screws, WH, with spring screw and washer

# TBe-Series

## Accessories - Automatic screw feeders



### NJ-Series

- Screwdriver can be used with standard bit and suction equipment
- Special screws can be used (also screws with washers or spring washers)
- Various expansion containers available
- Thanks to exchangeable rails, different screw sizes are supported

### NJR-Series

- Special screws can be used (also screws with washers or spring washers)

- Robot operation
- Smooth production flow
- Signal for missing screw on the screw holder
- Various expansion holders available

Complements the Quicher series:

### NJ-45

- Automatic screw feeder for vacuum take-up of the screws (allows automation with miniature screws)

## Technical Data

	NJ-Series	NJR-Series
<b>Input</b>	AC 230V	AC 230V
<b>Output</b>	DC 12 V, 500 mA	DC 12 V, 500 mA
<b>Power connection</b>	AC power supply	AC power supply
<b>Dimensions (L x W x H)</b>	130 x 215 x 136 mm	130 x 275 x 136 mm
<b>Weight (with rail)</b>	ca. 3,2 kg	ca. 4,2 kg
<b>Chamber capacity</b>	approx. 150 screws	approx. 150 screws
<b>Guard</b>	Motor stop in case of overload and safety switch	Motor stop in case of overload and safety switch

# TBe-Series

## Accessories- Automatic screw feeders

### NJ / NJR Series

#### Technical Data

Order no.	Screw diameter	Appropriate rail	Max. screw length
HST-NJ-2320	M2.0	HST-NJ-R20	18,0 mm
HST-NJ-2323	M2.3	HST-NJ-R23	18,0 mm
HST-NJ-2326	M2.6	HST-NJ-R26	18,0 mm
HST-NJ-2330	M3.0	HST-NJ-R30	18,0 mm
HST-NJ-4535	M3.5	HST-NJ-R35	18,0 mm
HST-NJR-4540	M4.0	HST-NJ-R40	18,0 mm
HST-NJR-4550	M5.0	HST-NJ-R50	18,0 mm

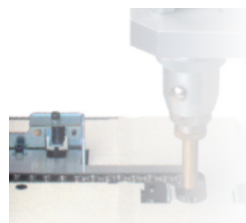
Order no.	Screw diameter	Appropriate rail	Max. screw length
HST-NJR-2320	M2.0	HST-NJ-RR20	18,0 mm
HST-NJR-2323	M2.3	HST-NJ-RR23	18,0 mm
HST-NJR-2326	M2.6	HST-NJ-RR26	18,0 mm
HST-NJR-2330	M3.0	HST-NJ-RR30	18,0 mm
HST-NJR-4535	M3.5	HST-NJ-RR35	18,0 mm
HST-NJR-4540	M4.0	HST-NJ-RR40	18,0 mm
HST-NJR-4550	M5.0	HST-NJ-RR50	18,0 mm



NJR with robot



Screw removal (Hand)



Screw removal (Robot)



Expansion container









# **HS-Technik GmbH**

**High - System - Technik**

Im Martelacker 12

D-79588 Efringen-Kirchen

Phone: +49 (0) 76 28 - 91 11-0

Fax: +49 (0) 76 28 - 91 11-90

E-mail: [info@hs-technik.com](mailto:info@hs-technik.com)

Internet: [www.hs-technik.com](http://www.hs-technik.com)

© Copyright April 2022

Subject to modifications and errors. All figures are non-binding.

We reserve the right to make technical changes to our products and the range of products as a result of further development.

Reproduction and the use of texts, even excerpts of our brochures is prohibited and will be prosecuted.