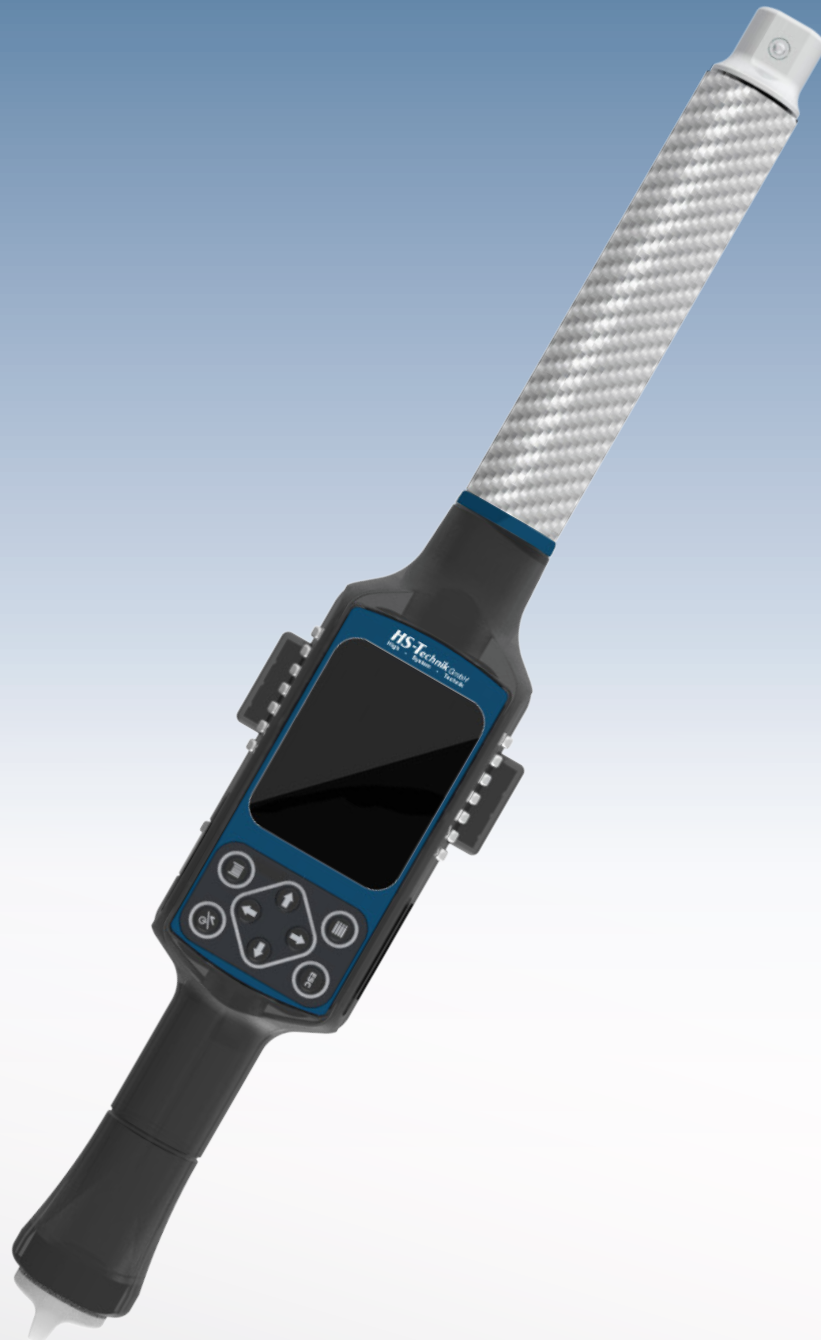


# WrenchBee

Torque & Angle Wrench



Premium Power Tools



**HS-Technik** GmbH  
High - System - Technik

# WrenchBee

## Technical data

- Light, robust and accurate
- Automatic obstacle detection & incorrect hand position
- Wireless communication for data traceability
- End-fitting recognition (optional)
- High memory capacity
- Optional with barcode reader

### Technical data

Autonomy	Up to 8 hours
Torque accuracy	0.5 % of the read value
Torque range	10 to 100 %
Angle accuracy	+/-1° over 360°
Memory 16 GB	>50 000 operations, traces and results
Features	<ul style="list-style-type: none"><li>• Wireless communication WIFI/Bt</li><li>• WIFI 802.11 a/b/g/n</li><li>• Bluetooth V2</li><li>• Full security management</li><li>• WEP, WPA, WPA 2, EAP-TLS, LEAP, PEAP</li><li>• LAB functionalities</li><li>• Untightening detection</li></ul>

### WrenchBee is delivered with:

- Protection cover
- Display protection
- Wi-Fi radio wings
- 1x 3,6 V Li-Ion battery



### Tightening strategy

Fastening torque driven

Fastening torque/angle

Fastening yield

Fastening yield/angle

Prevailing torque

# WrenchBee

## Technical data

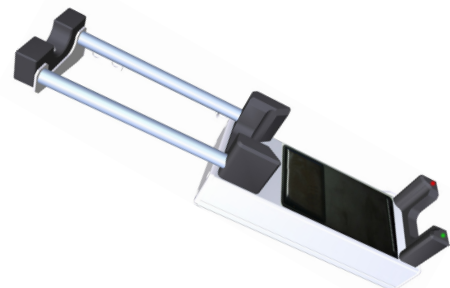
Model	Torque range	Drive	L1	Weight
WB-P15*	1.5 - 15 Nm	9 × 12 mm	364 mm	1.2 kg
WB-P30*	3 - 30 Nm	9 × 12 mm	364 mm	1.2 kg
WB-P50*	5 - 50 Nm	9 × 12 mm	364 mm	1.2 kg
WB-P70*	7 - 70 Nm	9 × 12 mm	470.5 mm	1.3 kg
WB-P100*	10 - 100 Nm	9 × 12 mm	470.5 mm	1.3 kg
WB-P200*	20 - 200 Nm	14 × 18 mm	604.5 mm	1.4 kg
WB-P300*	30 - 300 Nm	14 × 18 mm	754.5 mm	1.5 kg
WB-P400*	40 - 400 Nm	14 × 18 mm	854.5 mm	1.8 kg
WB-P600*	60 - 600 Nm	14 × 18 mm	1034.5 mm	1.9 kg
WB-P800*	80 - 800 Nm	22 × 28 mm	1255 mm	2.5 kg
WB-P1000*	100 - 1000 Nm	Special	1570 mm	5.7 kg**
WB-P1200*	120 - 1200 mm	Special	1570 mm	5.7 kg**

\*B = barcode reader option

\*\*End-fitting tool included, fixed (not interchangeable), 1" square drive

## Wireless charging trays

Article No.	Description
197130049	Wireless charging tray for 15/30/50 Nm wrenches
197130050	Wireless charging tray for 70/100 Nm wrenches
197130051	Wireless charging tray for 200 Nm wrenches
197130052	Wireless charging tray for 300 Nm wrenches
197130053	Wireless charging tray for 400 Nm wrenches
197130054	Wireless charging tray for 600 Nm wrenches
197130055	Wireless charging tray for 800 Nm wrenches
197130056	Wireless charging tray for 1000 Nm wrenches



## Accessories

Article No.	Description
WB-EC1-2A	1-bay battery charger for WrenchBee battery 313210280
313210280	Li-Ion battery 3,6 V, 3.1 Ah
197140038	Option tool recognition for wrenches with 9×12 drive
197140039	Option tool recognition for wrenches with 14×18 drive
197140040	WrenchBee Programming Unit for drive recognition
323190105	Protection cover for WrenchBee
313110177	Protection cover incl. display protection for WrenchBee
323190012	Display protection for WrenchBee
333410103	USB-cable type C



Standard end-fitting/  
end fitting recognition

**HS-T***echnik* GmbH  
High - System - Technik

Im Martelacker 12  
D-79588 Efringen-Kirchen  
Phone: +49 (0) 76 28 - 91 11-0  
Fax: +49 (0) 76 28 - 91 11-90  
E-mail: [info@hs-technik.com](mailto:info@hs-technik.com)  
Internet: [www.hs-technik.com](http://www.hs-technik.com)

© Copyright April 2022

Subject to modifications and errors. All figures are non-binding.

We reserve the right to make technical changes to our products and the range of products as a result of further development.

Reproduction and the use of texts, even excerpts of our brochures is prohibited and will be prosecuted.