

Carbon torque arms



TAC series - optimized for industrial applications



- Torque relieving up to 220 Nm
- 2 axis precise positioning of the screw
- Improved ergonomics, results in less exhaustion of the operator
- Smooth-running through high quality components
- Minimal weight

- Maintenance-free
- Very robust, thanks to the best quality of carbon fibre
- Inner balancer cable run at the TACV series
- Absorption of weight and reaction force
- Suitable for different tools



Absorption of reaction force for torques up to 220 Nm.



Torque relief cart incl. carbon telescope arm and replaceable tool adapter up to max. 80 Nm.

Available upon request



Fast and undisturbed running telescope elements (3 pieces per arm).

Suitable tool holder for many tool types available.



Fast and easy mounting at 8 mm aluminium profiles.



Torque relief arms are delivered without tools. Illustrated tools serve as examples.



Carbon torque arms

ergonomical | quality | productivity

Process reliability

- With the employment of torque reaction arms the reaction force of hand-operated torque screwdrivers which affect the operator will be reduced or completely eliminated. This leads to less exhaustion of the operator and increases productivity. In extreme cases constant impairments at hand, arm, shoulder and neck can occur and absent times of operators can increase. The ISO EN 11148-6 recommends the employment of convenient torque reaction arms already at low torques. In this way ergonomical work places are a must in modern production facilities.

The fixation and the associated guidance of the tool guarantees the best possible screwing quality of your products. Low defective good rates pay dividends really fast.

- Since the burden and with this also the exhaustion of the operator subsides, the process reliability and also the process accuracy are rising.
- Thanks to the high quality carbon fiber the TAC series is very effortless and moves easily. The operator will not be restricted in his movement sequences.

- With the optional balancer the weight of the tool can be eliminated.
- A torque reaction arm can be combined with tools starting from straight over pistol, up to the angle screwdriver.
- In high torque or continuous load applications a torque reaction arm is required for the safety and well-being of the operator.
- Because of the reduction or elimination of the reaction force, hand-, arm- and shoulder pain will be prevented.

Basic Tool Holder

Order no.	no.	Tool grip (mm)		Description	Compatible with
		ø min	ø max		
-	1	26,5	44	Basic Tool Holder	TAC-10 (*)
TAC-15-BTH	2	27	45	Basic Tool Holder with 2 screws	TAC-15
TAC-40-BTH	3	30	60	Basic Tool Holder with 2 screws	TAC-40 TAC-80
TAC-80-BTH	4	30	60	Basic Tool Holder with 4 screws	TAC-40 TAC-80
TAC-150-BTH	5	40	70	Basic Tool Holder	TAC-150 TAC-220



Carbon torque arms



Horizontal application

Order no.	Length min.	Length max.	Torque max.	Incl. tool holder
TAC-10-1000	495 mm	1,105 mm	10 Nm	TAC-15-BTH
TAC-10-1500	665 mm	1,605 mm	10 Nm	TAC-15-BTH
TAC-15-1000	486 mm	1,066 mm	15 Nm	-
TAC-15-1500	646 mm	1,556 mm	15 Nm	-
TAC-15-2000	806 mm	2,046 mm	15 Nm	-
TAC-40-1000	486 mm	1,066 mm	40 Nm	-
TAC-40-1500	646 mm	1,556 mm	40 Nm	-
TAC-40-2000	806 mm	2,046 mm	40 Nm	-
TAC-40-2500	986 mm	2,576 mm	40 Nm	-
TAC-80-1500	658 mm	1,586 mm	80 Nm	-
TAC-80-2000	828 mm	2,078 mm	80 Nm	-
TAC-80-2500	998 mm	2,588 mm	80 Nm	-
TAC-150-1500	668 mm	1,578 mm	150 Nm	-
TAC-150-2000	838 mm	1,918 mm	150 Nm	-
TAC-150-2500	1,003 mm	2,248 mm	150 Nm	-
TAC-220-1500	668 mm	1,578 mm	220 Nm	-
TAC-220-2000	838 mm	2,088 mm	220 Nm	-
TAC-220-2500	1,003 mm	2,588 mm	220 Nm	-



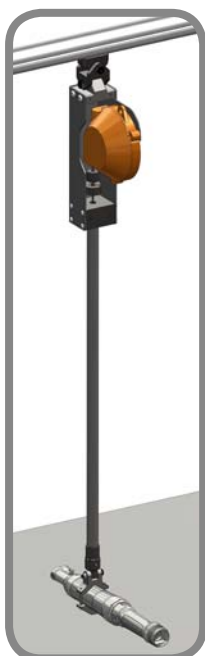
To be used when tightening torque axis is perpendicular to arm axis.



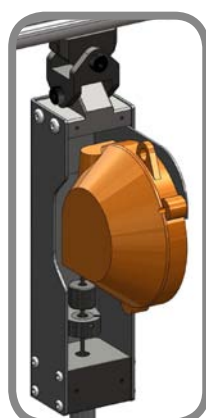
Carbon torque arms

Vertical application

Order no.	Length min.	Length max.	Torque max.	Incl. tool
TACV-15-1000	777 mm	1,345 mm	15 Nm	-
TACV-15-1500	937 mm	1,835 mm	15 Nm	-
TACV-15-2000	1,097 mm	2,325 mm	15 Nm	-
TACV-40-1000	777 mm	1,835 mm	40 Nm	-
TACV-40-1500	937 mm	1,556 mm	40 Nm	-
TACV-40-2000	1,097 mm	2,325 mm	40 Nm	-
TACV-40-2500	1,277 mm	2,855 mm	40 Nm	-
TACV-80-1500	949 mm	1,865 mm	80 Nm	-
TACV-80-2000	1,119 mm	2,357 mm	80 Nm	-
TACV-80-2500	1,289 mm	2,867 mm	80 Nm	-
TACV-150-1500	960 mm	1,957 mm	150 Nm	-
TACV-150-2000	1,129 mm	2,357 mm	150 Nm	-
TACV-150-2500	1,294 mm	2,862 mm	150 Nm	-
TACV-220-1500	960 mm	1,957 mm	220 Nm	-
TACV-220-2000	1,129 mm	2,357 mm	220 Nm	-
TACV-220-2500	1,294 mm	2,867 mm	220 Nm	-



Used when the torque axis is vertical to the arm axis.



Balancer unit

Order no.	Description	max. Weight
TACV-03	HST floating balancer	3.0 kg
TACV-05	HST floating balancer	5.0 kg

With the optional balancer, the weight of the tool can be eliminated. The balancing unit consists of the casing, the assembly unit for an 8 mm aluminum profile and the floating balancer.

Carbon torque arms



Multi-position tool holder

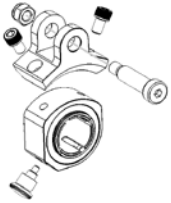
Order no.	no.	Tool grip (mm)		Description	Compatible with
		ø min	ø max		
TAC-15-MTH-INT	1	n/a	n/a	Multi-position tool holder interface	TAC-15
TAC-15-MTH	2	27	45	Multi-position tool holder	TAC-15
MTH-EXT-90	3	n/a	n/a	Extension 90 mm for Multi-position tool holder	TAC-15
TAC-40-MTH-INT	4	n/a	n/a	Multi-position tool holder interface	TAC-40 TAC-80
TAC-40-MTH	5	27	45	Multi-position tool holder	TAC-40 TAC-80
MTH-EXT-120-1	6	n/a	n/a	Extension 120 mm for Multi-position tool holder	TAC-40 TAC-80
TAC-150-MTH-INT	7	n/a	n/a	Multi-position tool holder interface	TAC-150 TAC-220
TAC-150-MTH	8	40	70	Multi-position tool holder	TAC-150 TAC-220
MTH-EXT-120	9	n/a	n/a	Extension 120 mm for Multi-position tool holder	TAC-150 TAC-220





Carbon torque arms

Swivel-Tool-Holder



Order no.	no.	Tool grip (mm)		Description	Compatible with
		ø min	ø max		
TAC-15-STH	1	20	35	Swivel-Tool-Holder	TAC-15** TAC-40** TAC-80**
TAC-150-STH	2	40	55	Swivel-Tool-Holder	TAC-15*** TAC-40*** TAC-80*** TAC-150***
*	3	30*	57*	Adapter	All arms
TAC-15-STH-INT	4	n/a	n/a	Swivel-Tool-Holder interface	TAC-15
TAC-40-STH-INT	5	27	45	Swivel-Tool-Holder interface	TAC-40 TAC-80
TAC-150-STH-INT	6	n/a	n/a	Swivel-Tool-Holder interface	TAC-150

* Adapter with different diameters for different tools

** max. torque 80 Nm

*** max. torque 150 Nm



Quick Release - Fast-Exchange-Interface

Order no.	no.	Description
TAC-80-QR-INT	1	Fast-Exchange-Interface for TAC-40 & TAC-80
TAC-80-QR-PTH	2	Pistol-Tool-Holder for Fast-Exchange-Interface TAC-80-QR-INT, 35mm
TAC-80-QR-ATH	3	Angle-Tool-Holder for Fast-Exchange-Interface TAC-80-QR-INT, 35mm

