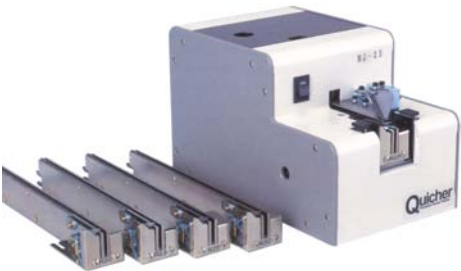


## NJ / NJR series



For small screws in the production environment



### NJ series

- Screwdriver can be used with standard bit and suction equipment
- Special screws can be used (also screws with washers or spring washers)
- Various expansion containers available
- Thanks to exchangeable rails, different screw sizes are supported

### NJR series

- Special screws can be used (also screws with washers or spring washers)

- Robot operation
- Smooth production flow
- Signal for missing screw on the screw holder
- Various expansion holders available

### Complements the Quicher series

- NJ-45  
Automatic screw feeder for vacuum take-up of the screws (allows automation with miniature screws)

## Technical Data

Order no.	NJ series	NJR series
Input	230 V	230 V
Output	DC 12 V, 500 mA	DC 12 V, 500 mA
Power connection	AC power supply	AC power supply
Dimensions (L x W x H) in mm	130 x 215 x 136	130 x 275 x 136
Weight in kg (with rail)	approx. 3.2	approx. 4.2
Chamber capacity	approx. 150 screws	approx. 150 screws
Guard	Motor stop in case of overload and safety switch	Motor stop in case of overload and safety switch



## NJ / NJR series

### Technical Data

Order no.	Screw diameter	Appropriate rail	Max. screw length in mm
HST-NJ-2320	M2.0	HST-NJ-R20	18.0
HST-NJ-2323	M2.3	HST-NJ-R23	18.0
HST-NJ-2326	M2.6	HST-NJ-R26	18.0
HST-NJ-2330	M3.0	HST-NJ-R30	18.0
HST-NJ-4535	M3.5	HST-NJ-R35	18.0
HST-NJ-4540	M4.0	HST-NJ-R40	18.0
HST-NJ-4550	M5.0	HST-NJ-R50	18.0

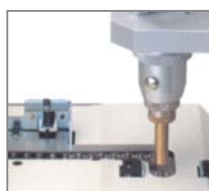
Order no.	Screw diameter	Appropriate rail	Max. screw length in mm
HST-NJR-2320	M2.0	HST-NJ-RR20	18.0
HST-NJR-2323	M2.3	HST-NJ-RR23	18.0
HST-NJR-2326	M2.6	HST-NJ-RR26	18.0
HST-NJR-2330	M3.0	HST-NJ-RR30	18.0
HST-NJR-4535	M3.5	HST-NJ-RR35	18.0
HST-NJR-4540	M4.0	HST-NJ-RR40	18.0
HST-NJR-4550	M5.0	HST-NJ-RR50	18.0



NJR with robot



Screw removal  
(Hand)



Screw removal  
(Robot)



Expansion container